

► CLOTHING REUSE

INSTRUCTION

INTRODUCE:

Use a needle and thread to give new life to old clothes that are about to be discarded. This manual will tell you how to make a carrying device from a discarded long sleeve.

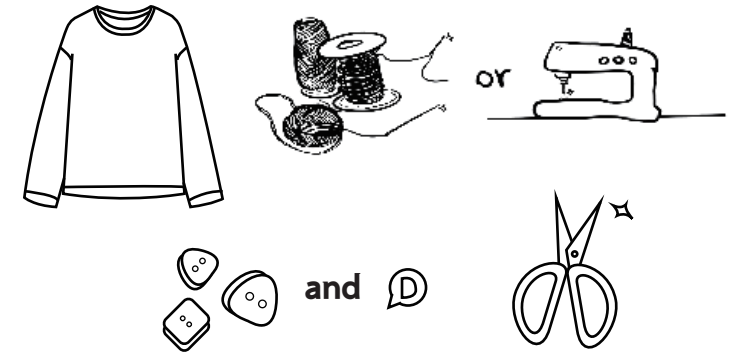
USER:

Isabel de la pradilla

TEACHER:

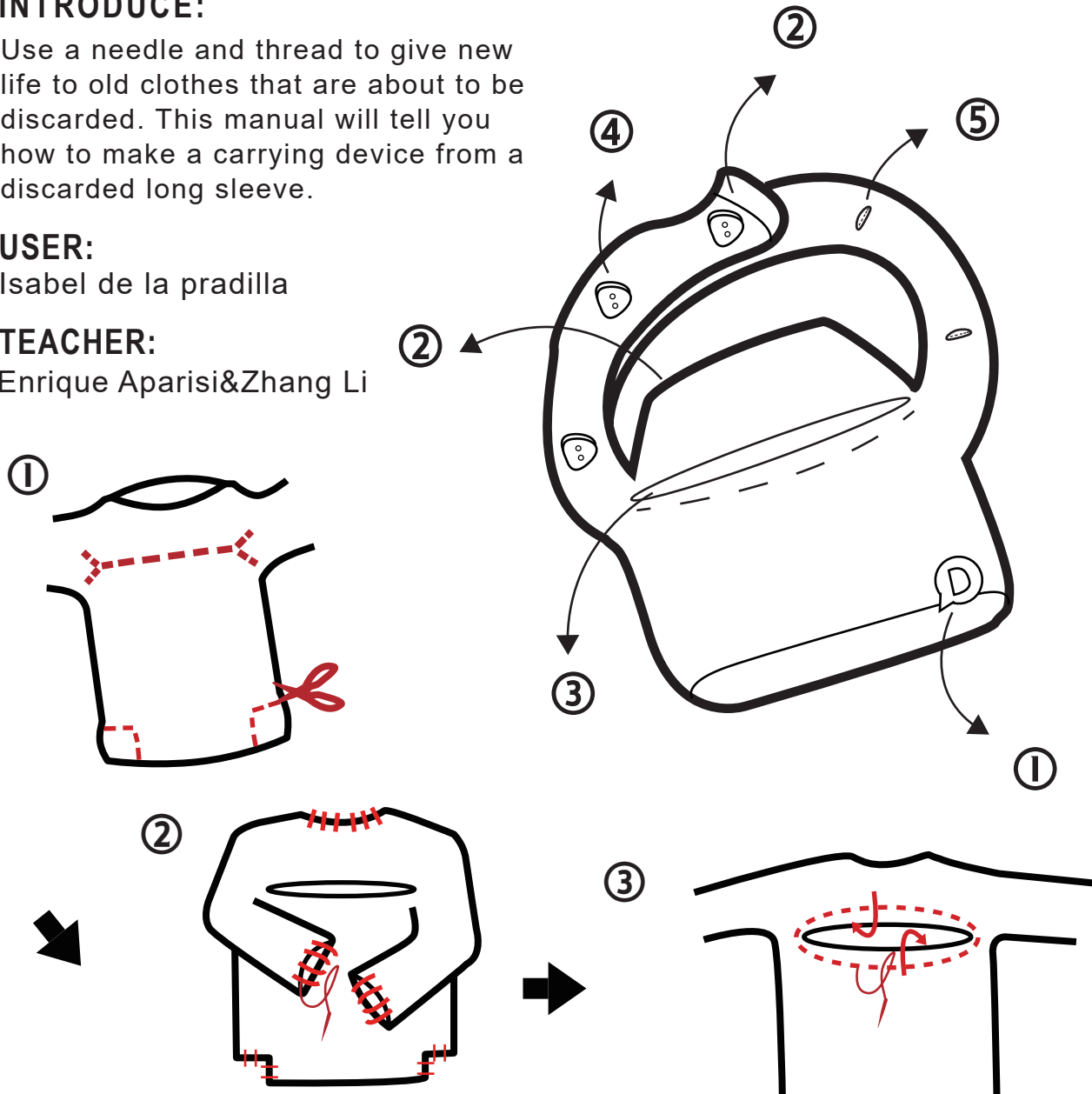
Enrique Aparisi&Zhang Li

MATERIALS&TOOLS:



NOTE:

1. Reverse it before making;
2. Turn the garment inside out when you sew it;
3. Pay attention to reserve 1~2cm space at the edge for wrapping;
4. To make the bag stronger, sew it tightly.
5. Note that the position of the button should be consistent with the size of the cut and aligned.



If you meet some problems when building this backpack,
please contact us:2665127561@qq.com,info@download.opendesign.com

► CLOTHING REUSE — INSTRUCTION

INTRODUCE:

Use a needle and thread to give new life to old clothes that are about to be discarded. This manual will tell you how to make a carrying device from a discarded long sleeve.

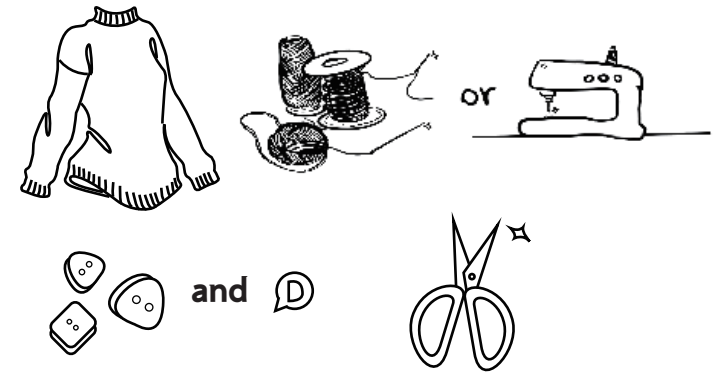
USER:

Isabel de la pradilla

TEACHER:

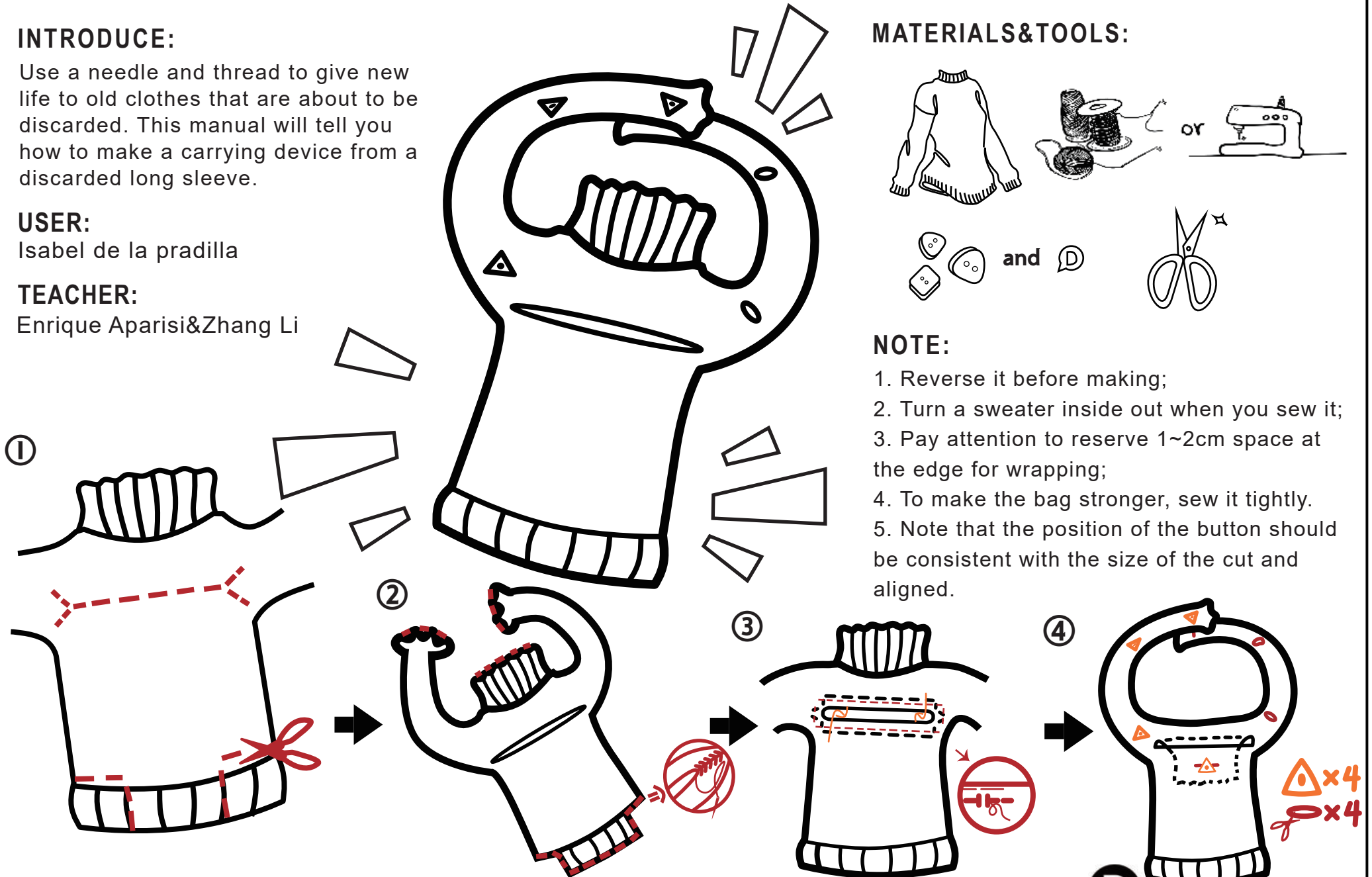
Enrique Aparisi&Zhang Li

MATERIALS&TOOLS:



NOTE:

1. Reverse it before making;
2. Turn a sweater inside out when you sew it;
3. Pay attention to reserve 1~2cm space at the edge for wrapping;
4. To make the bag stronger, sew it tightly.
5. Note that the position of the button should be consistent with the size of the cut and aligned.



If you meet some problems when building this backpack,
please contact us:2665127561@qq.com,info@download.opendesign.com

► CLOTHING REUSE — INSTRUCTION

INTRODUCE:

Use a needle and thread to give new life to old clothes that are about to be discarded. This manual will tell you how to make a carrying device from a discarded long sleeve.

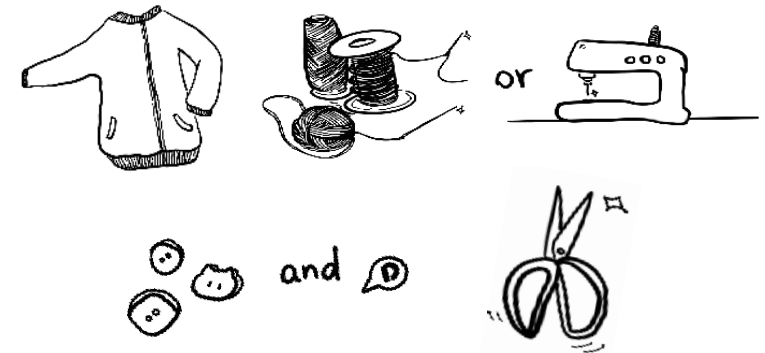
USER:

Isabel de la pradilla

TEACHER:

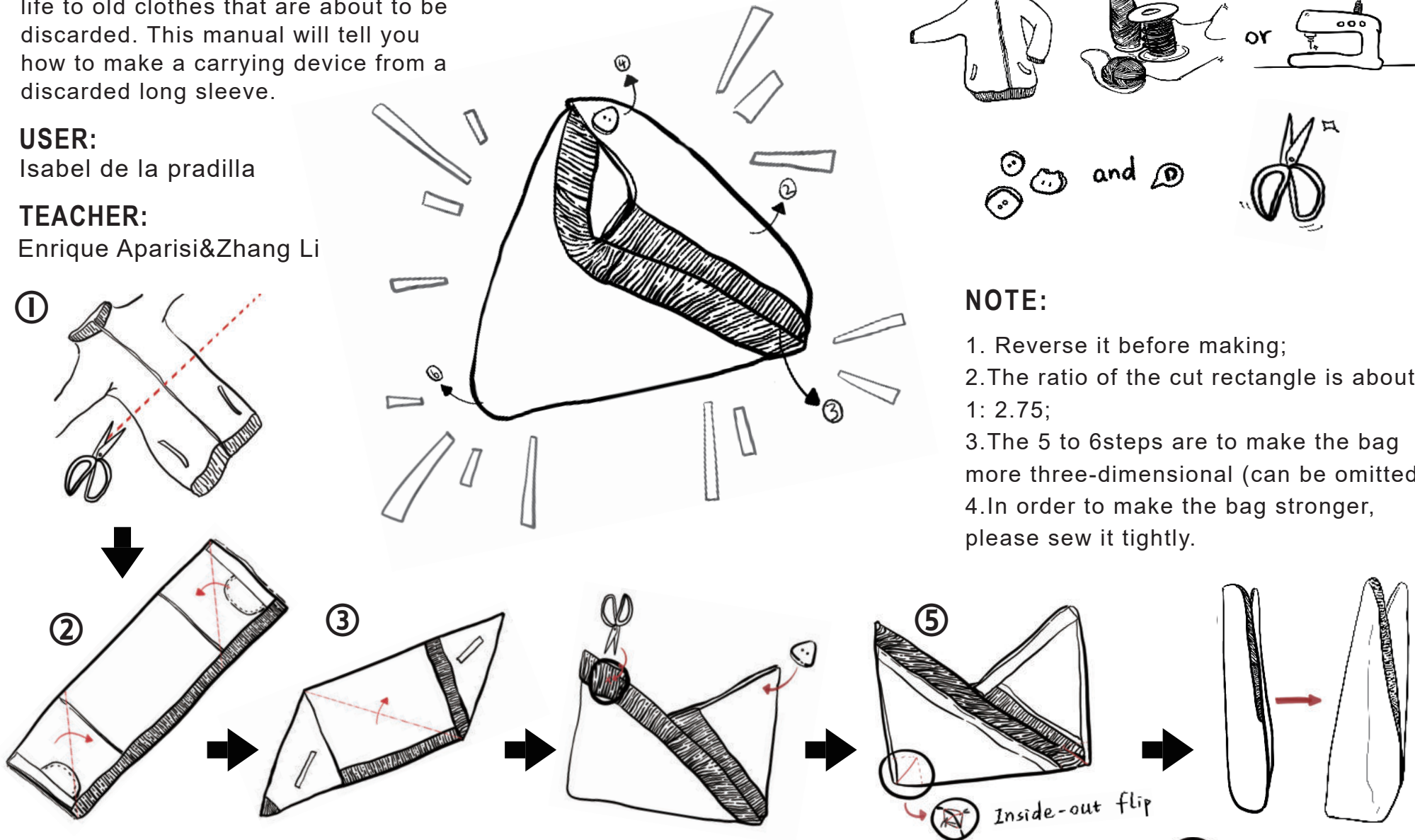
Enrique Aparisi&Zhang Li

MATERIALS&TOOLS:



NOTE:

1. Reverse it before making;
2. The ratio of the cut rectangle is about 1: 2.75;
3. The 5 to 6 steps are to make the bag more three-dimensional (can be omitted);
4. In order to make the bag stronger, please sew it tightly.



If you meet some problems when building this backpack,
please contact us: 2665127561@qq.com, info@download.opendesign.com