



FARIJA

co-designer Fatima Arib Talbaoui

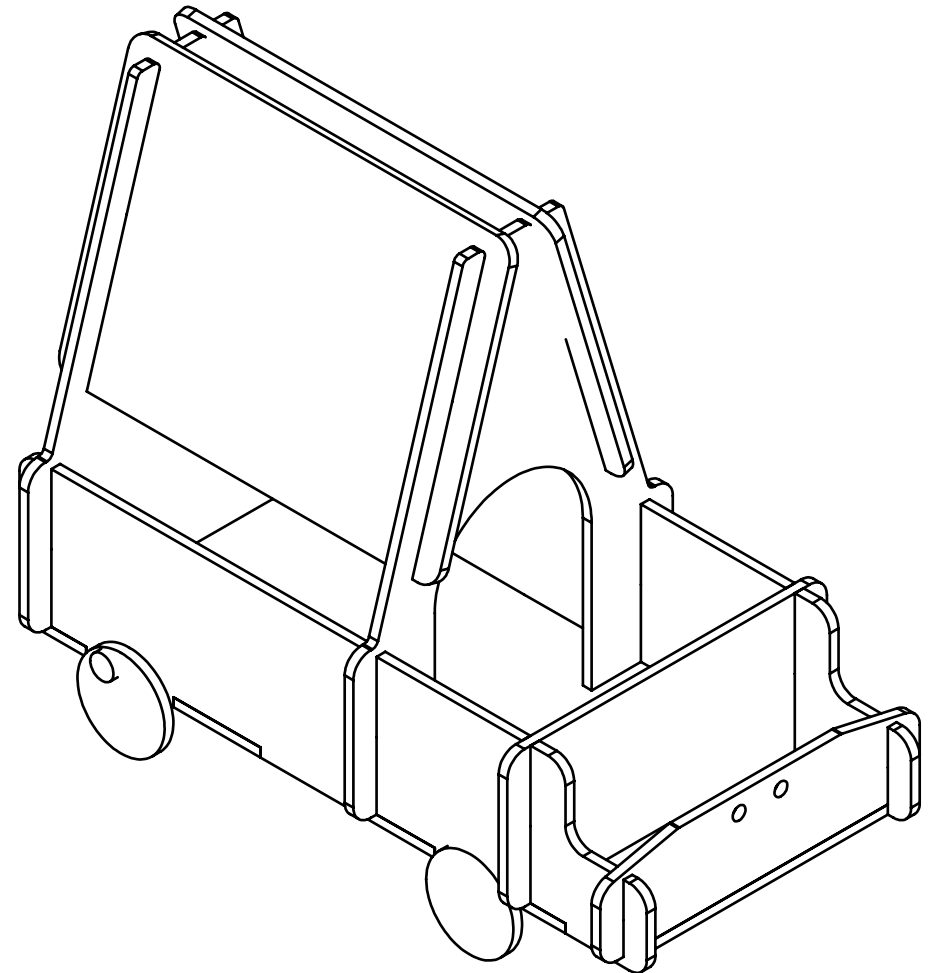
materials 15 mm pine plywood

tools CNC engraving machine, Screwdriver, Sandpaper

units mm

update 2021/6/21

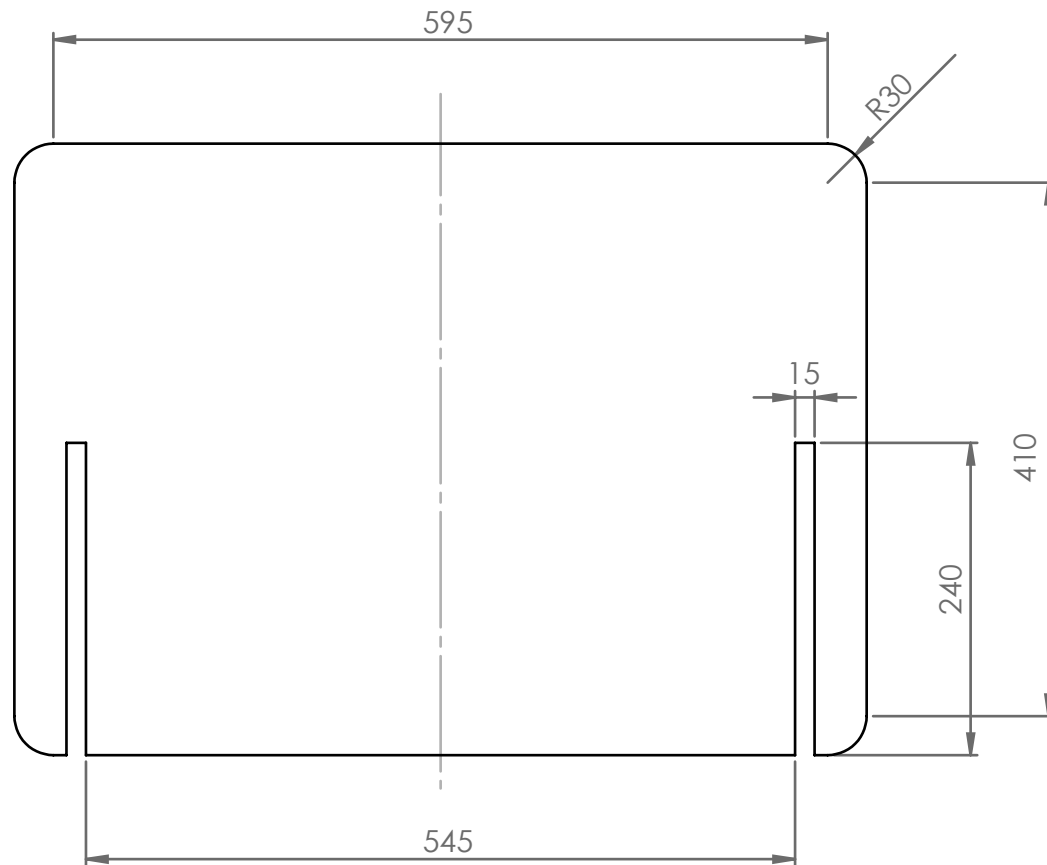
Escuela De Arte Y Superior De Diseño De Castellón De La Plana
Campus Castellón
Furniture design



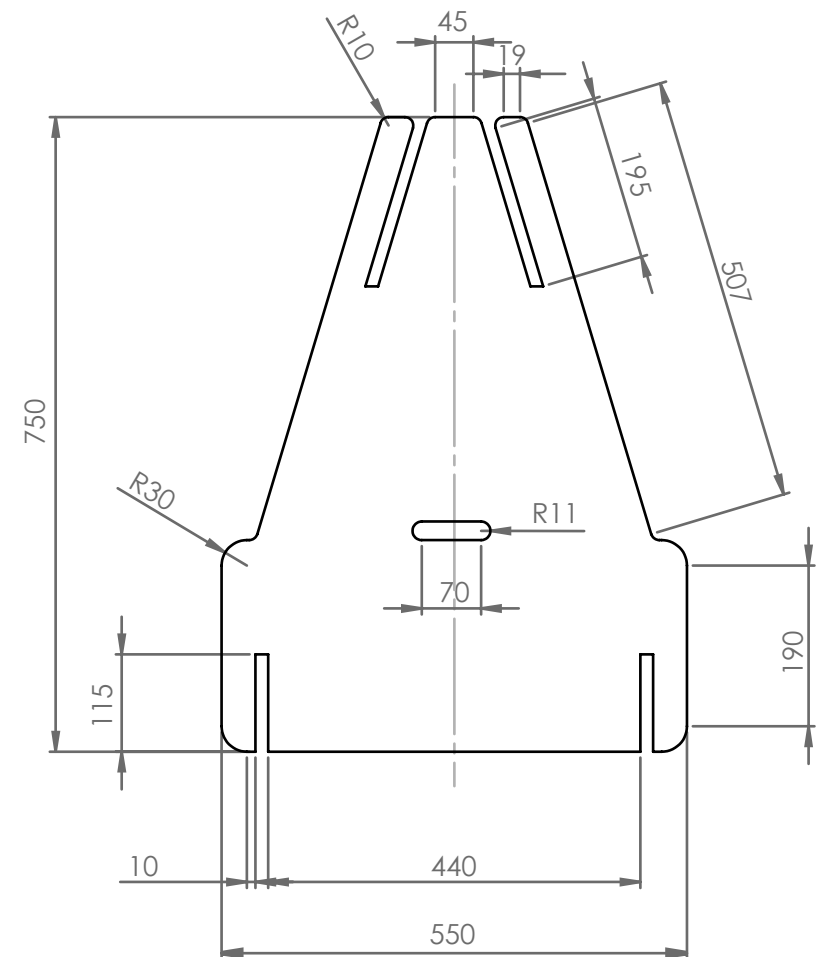
PARTS

15mm pine plywood

A (×2)



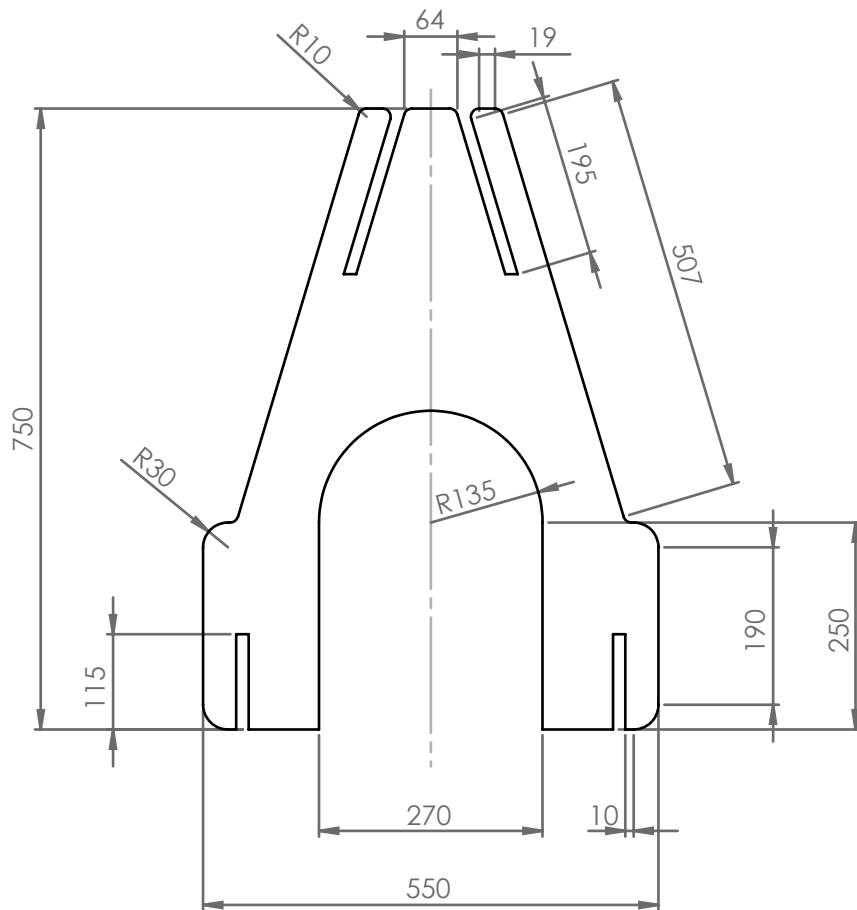
B (×1)



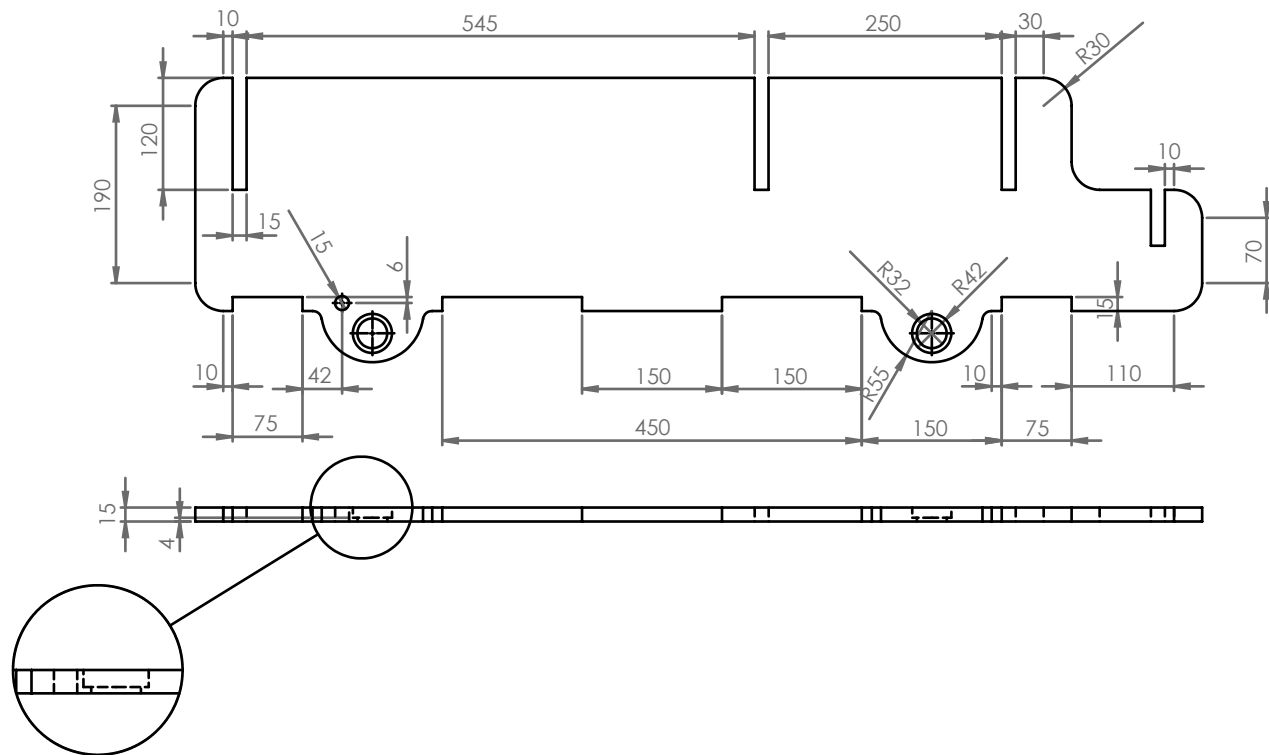
PARTS

15mm pine plywood

C (×1)



D (×2)

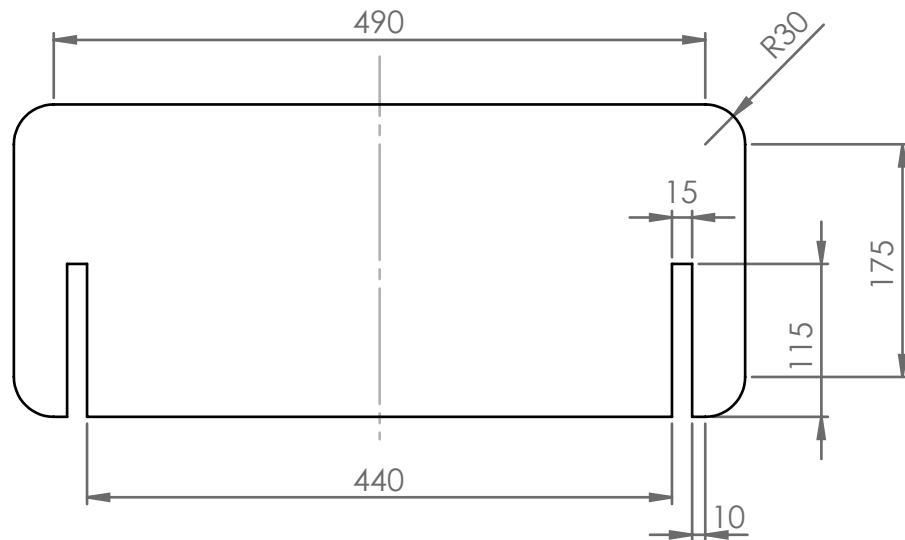


DETALLE D
ESCALA 1 : 3

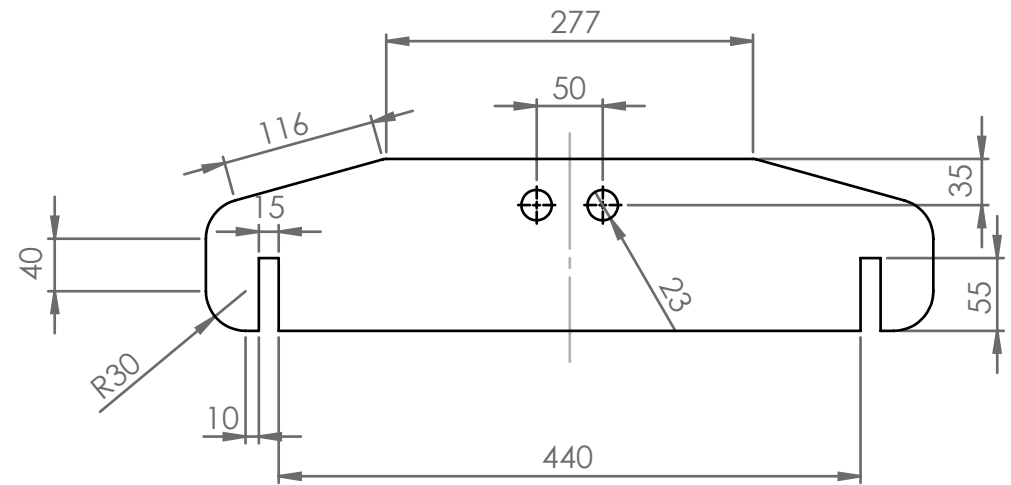
PARTS

15mm pine plywood

E (×1)



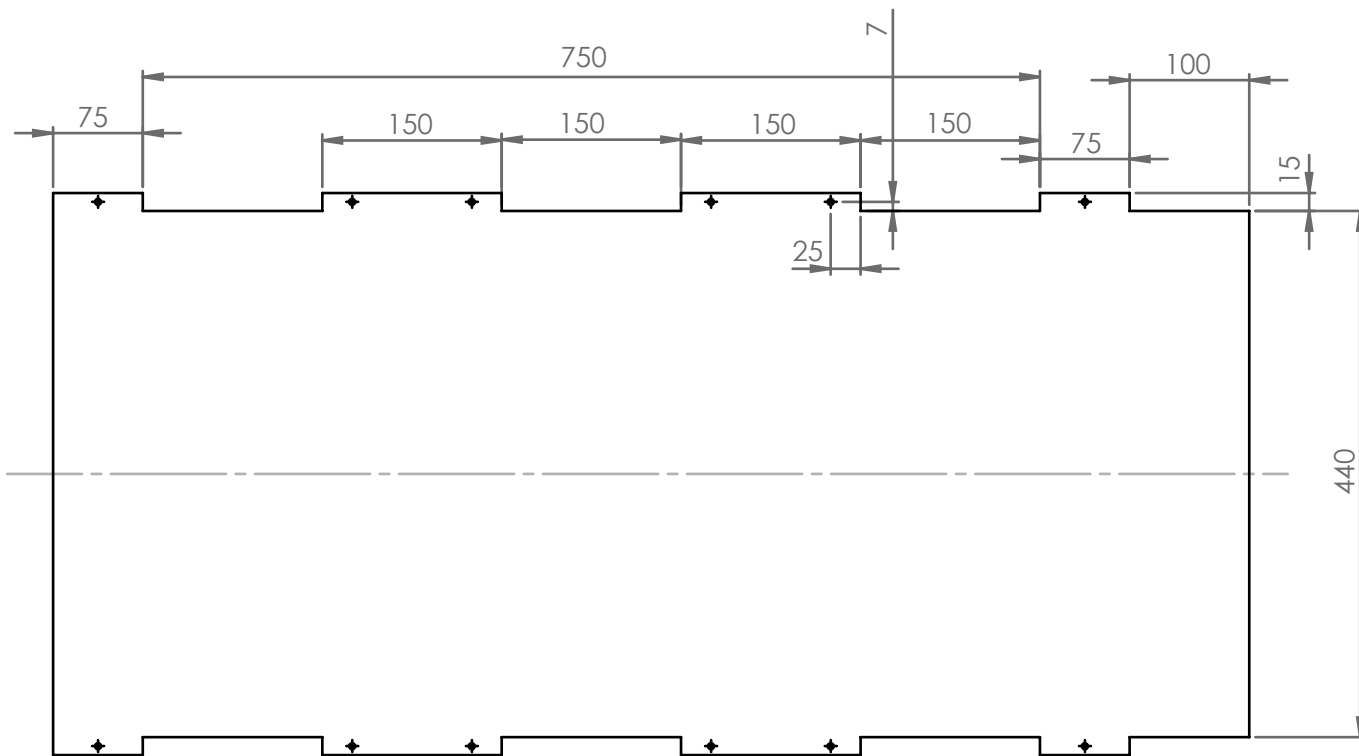
F (×1)



PARTS G

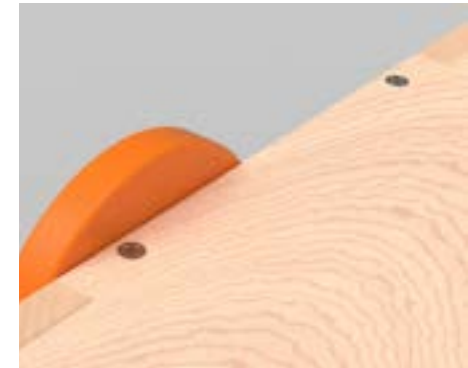
15mm pine plywood

G.1(×1)



G.2(×12)

Φ3.5x40mm Countersunk
Wood Screw

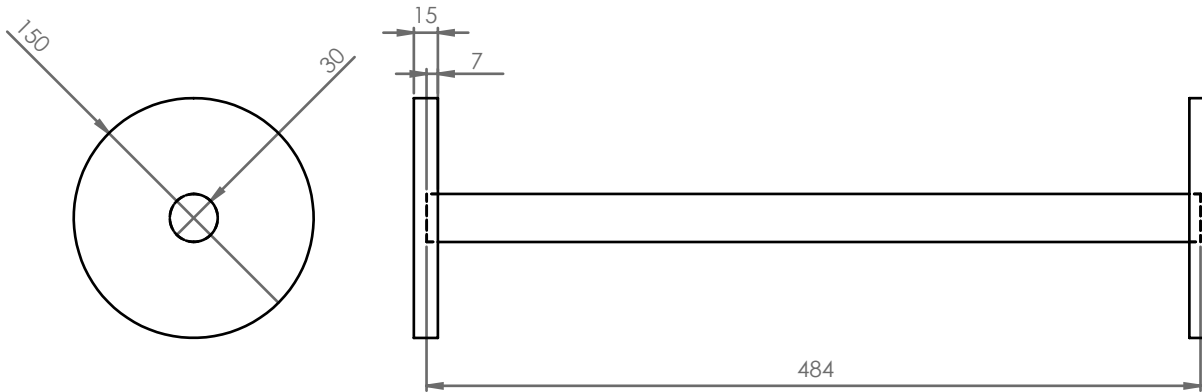


PARTS H

15mm pine plywood

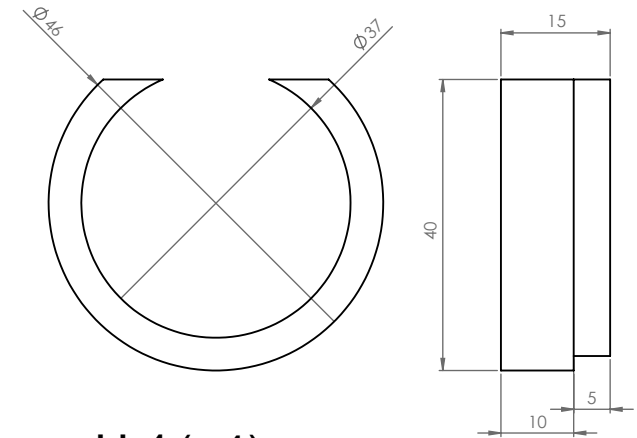
H.1 (×4) Wooden Wheels

H.2 (×2) $\Phi 30 \times 484 \text{mm}$ Circular wooden rod



H.3 (×4)

Wooden Support Piece



H.4 (×4)

Metal Ball Bearing

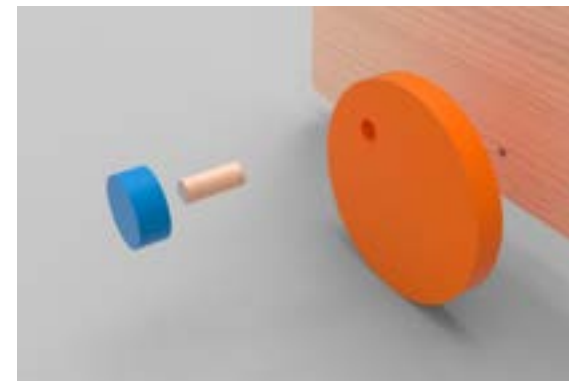
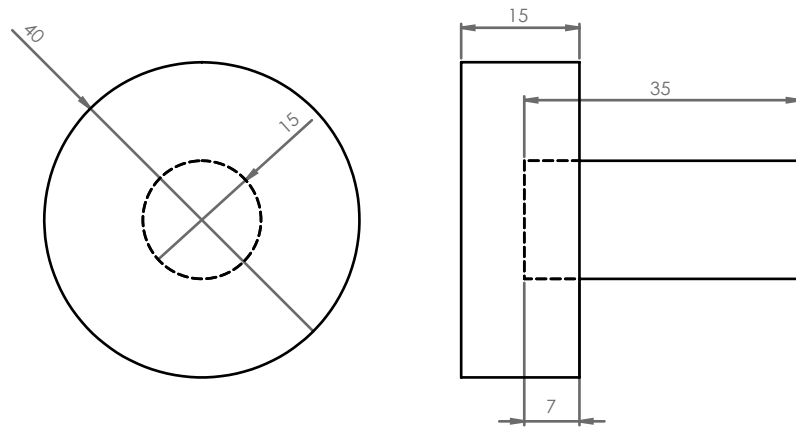


PARTS I

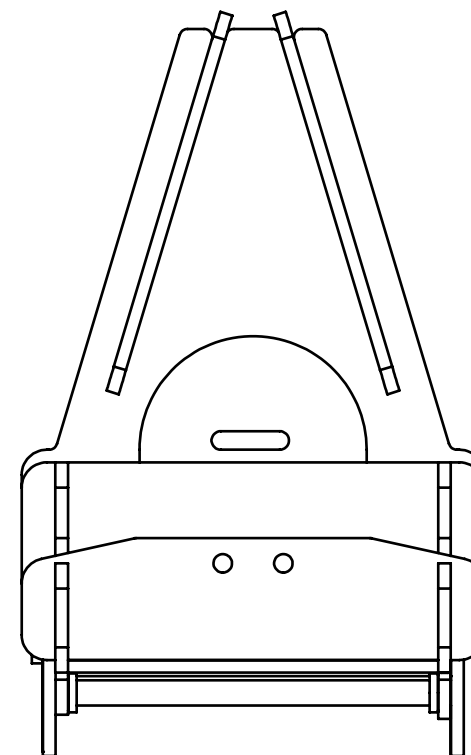
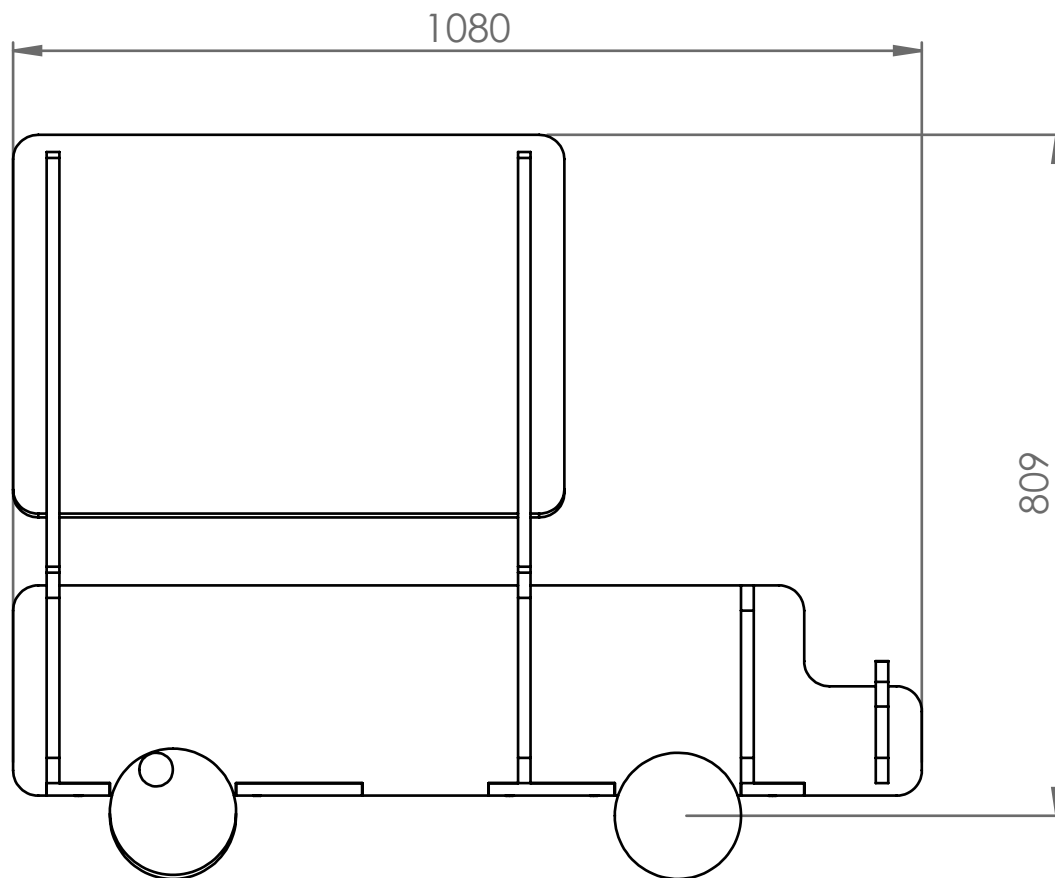
15mm pine plywood

I.1 (×2) Circular Wooden Brake

I.2 (×2) $\Phi 15 \times 35$ mm Circular
wooden rod

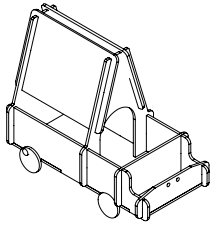


PARTS

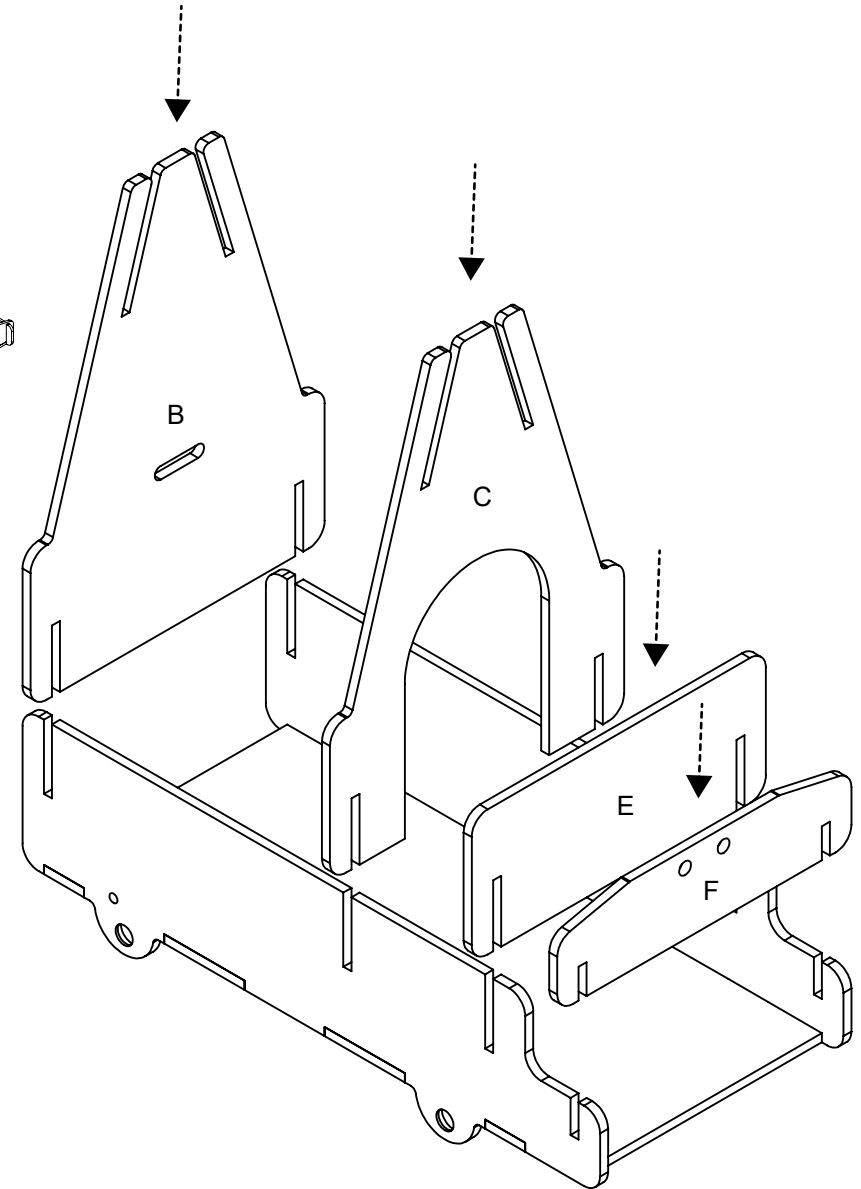
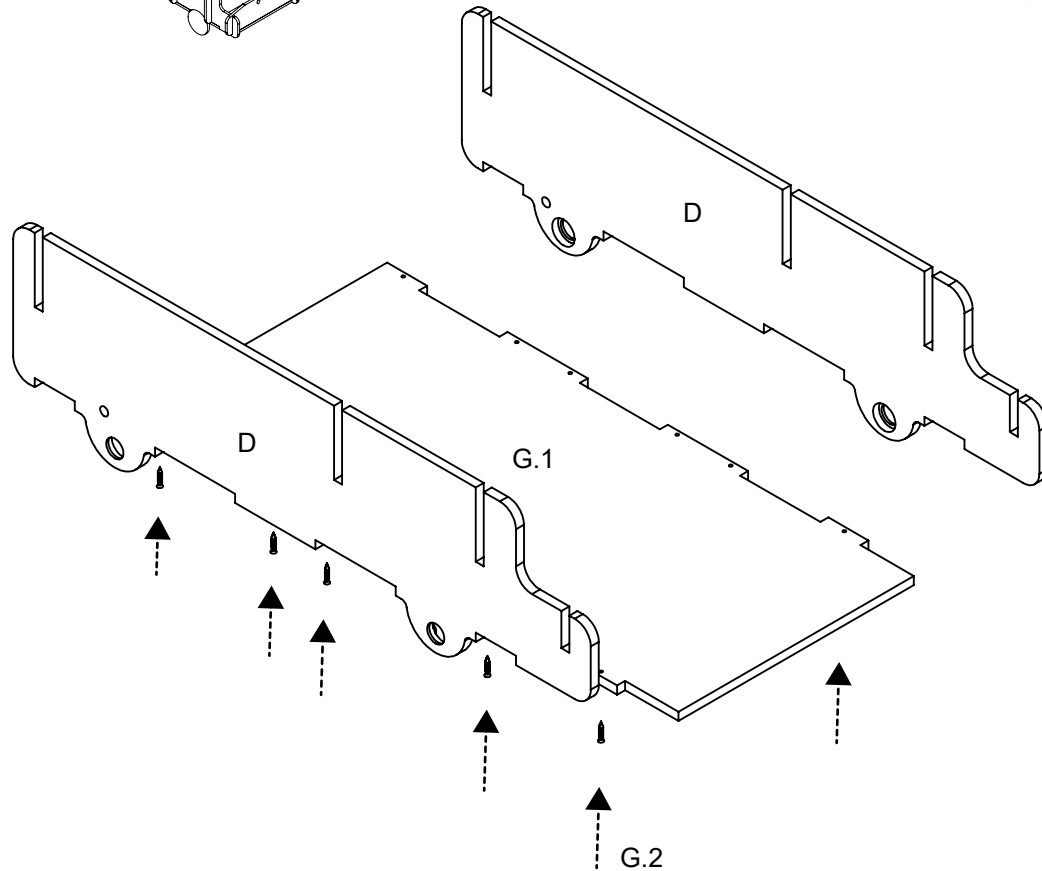
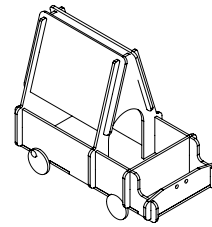


ASSEMBLY

1

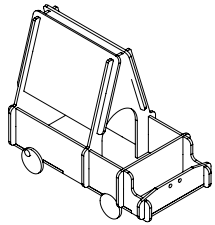


2

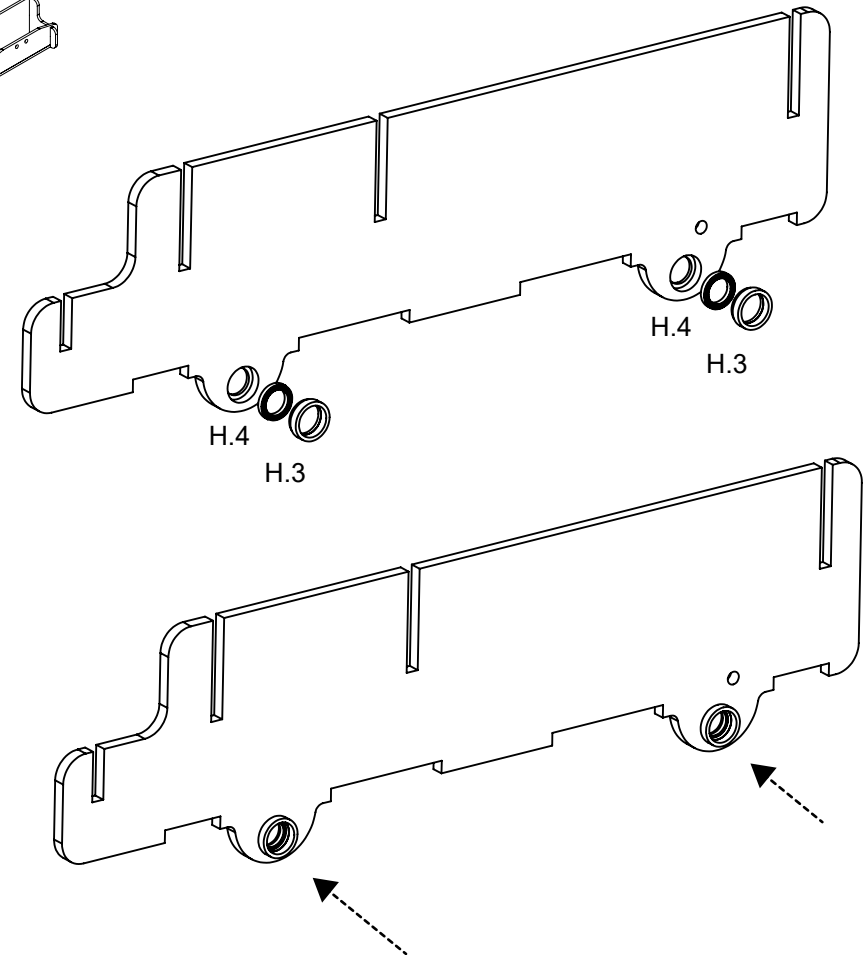
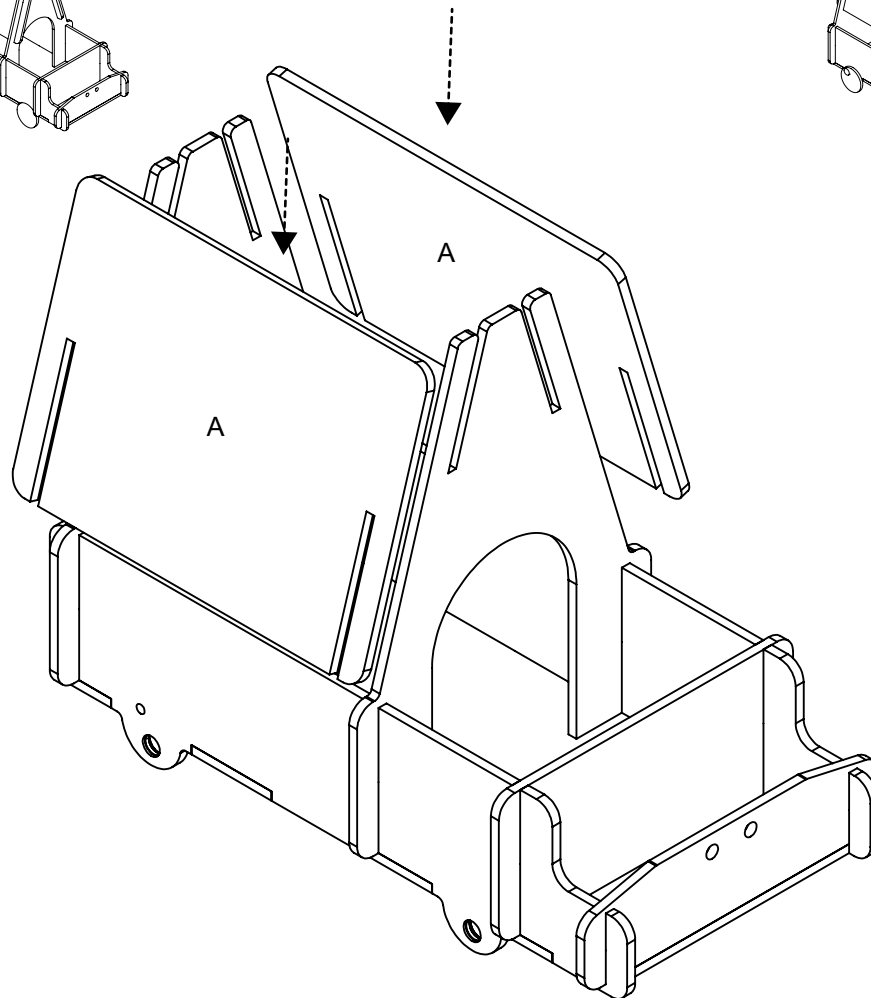
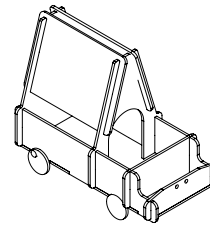


ASSEMBLY

3

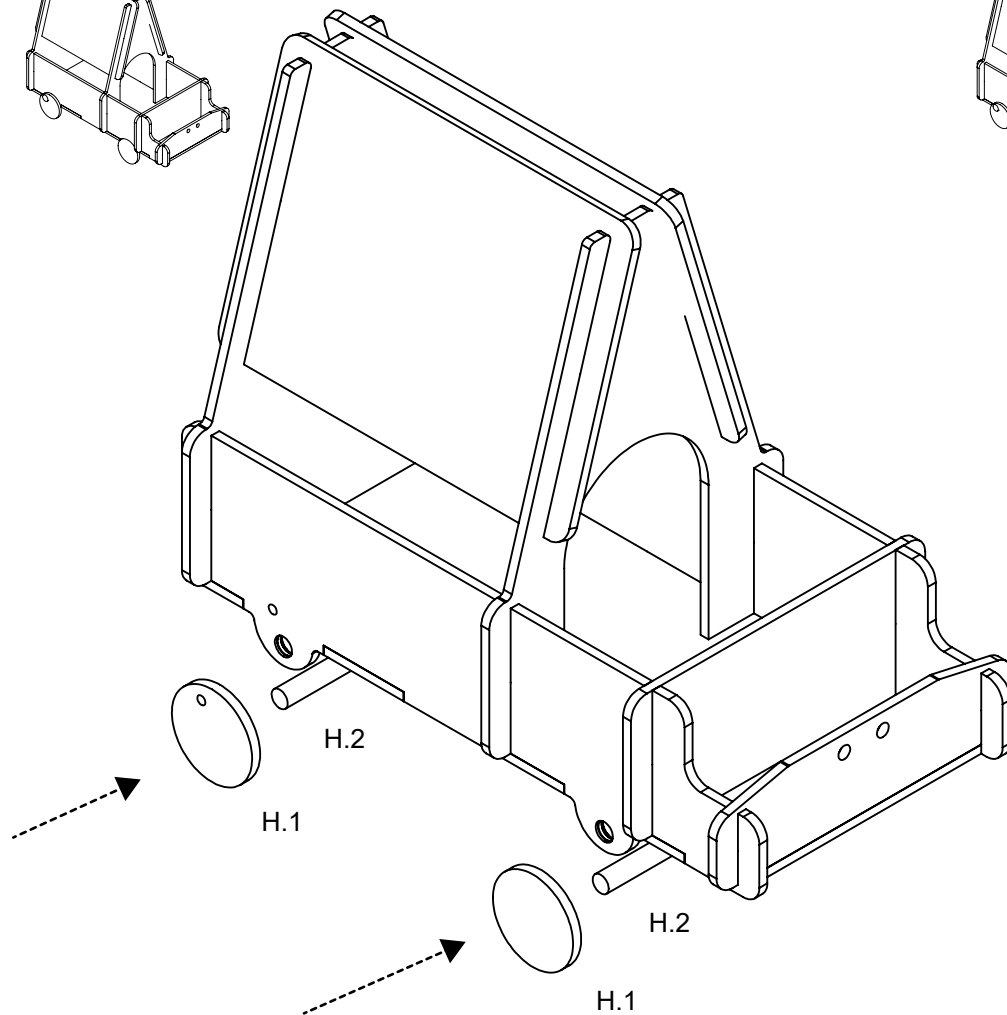
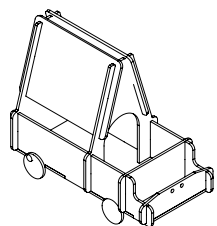


4

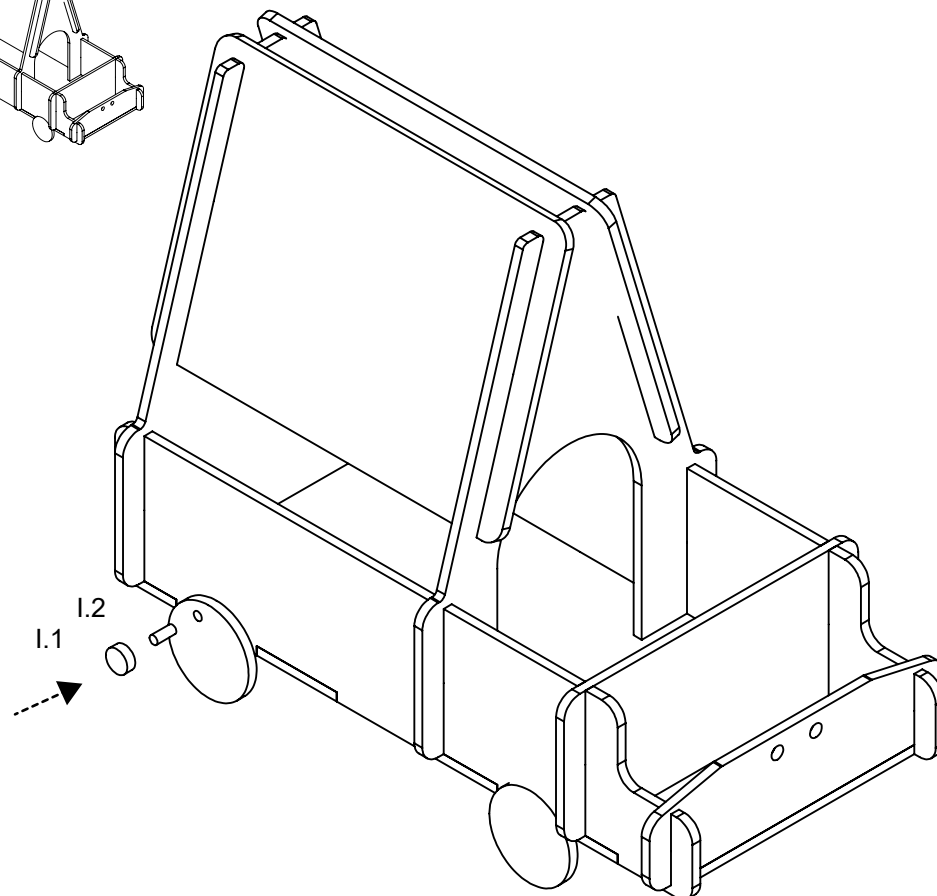
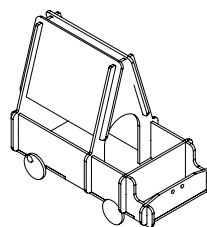


ASSEMBLY

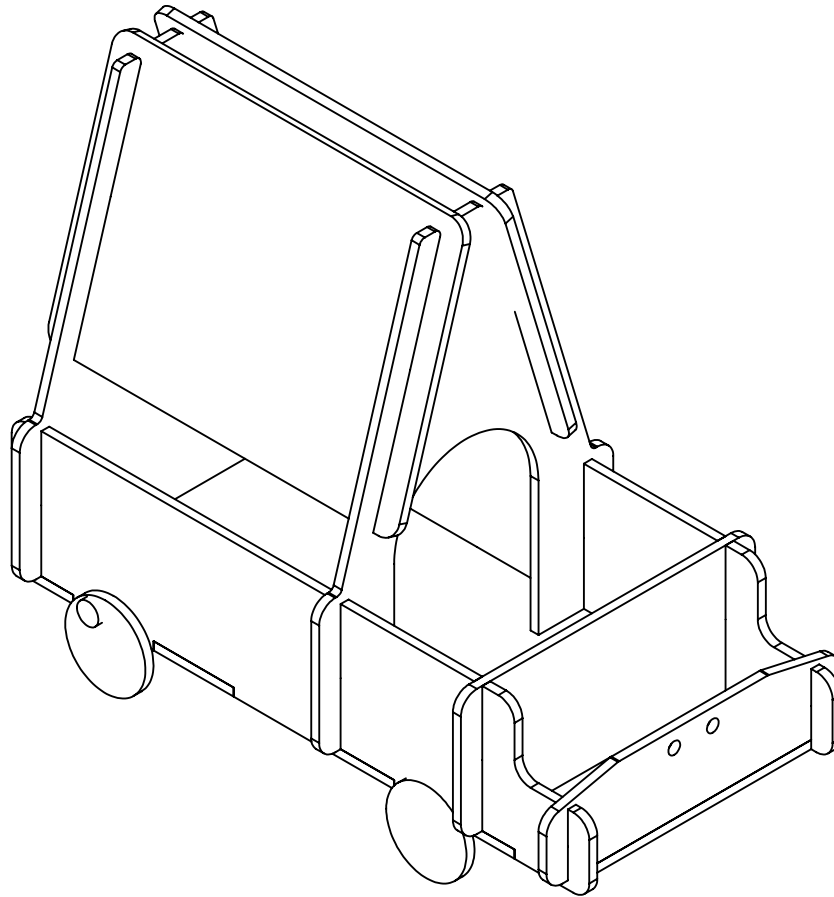
5



6



ASSEMBLY



Finished!