

Leisure 2.0

Inspired by a Leisure stool for Alejandra,
by Qiu Yifan, Liao Qiling, Lan Jincheng

designer **Zhu Jingxi, Xu Xuan, Ye Runling,**

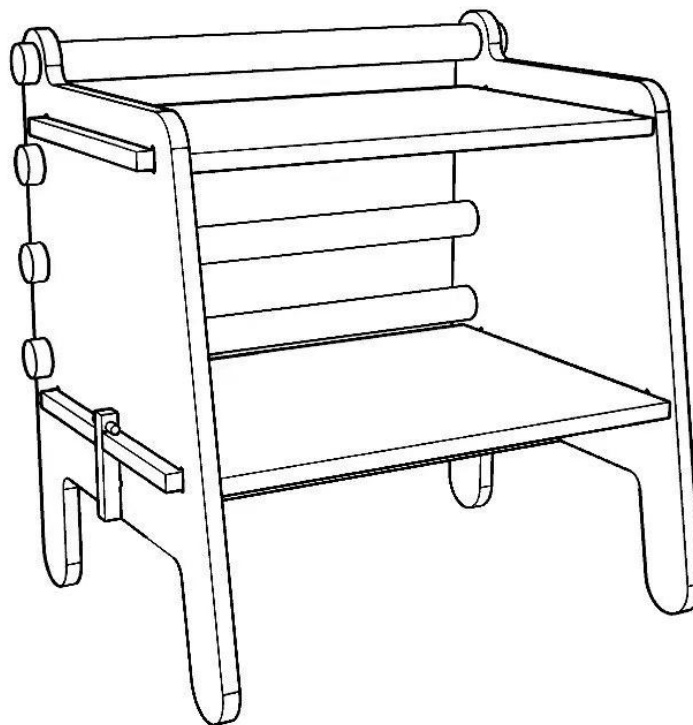
materials **Plybamboo board, Raw bamboo**

tools **Electric saw, Electric drill, Sand paper**

unit **mm**

Guangdong University of Technology
Opendesign+DIY Workshop

*If you meet some problems when building this stool,
please contact us: 974093901@qq.com info@downloadopendesign.com

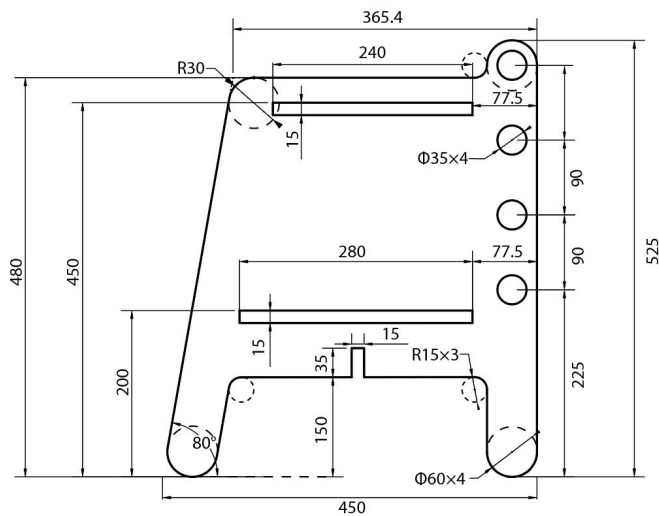


PARTS

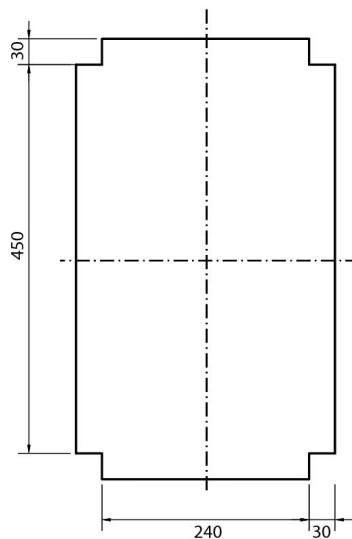
15mm Plybamboo board



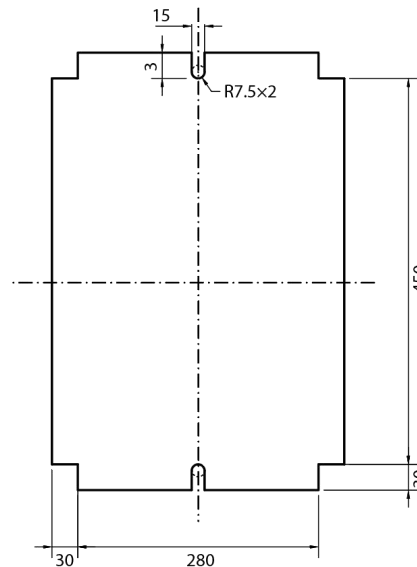
A (×2)



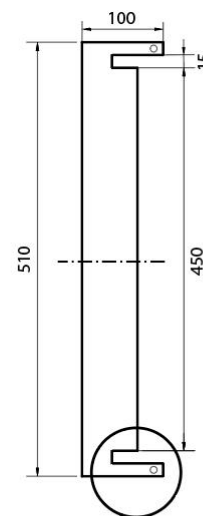
B (×1)



C (×1)

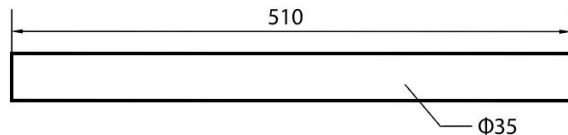


D (×1)



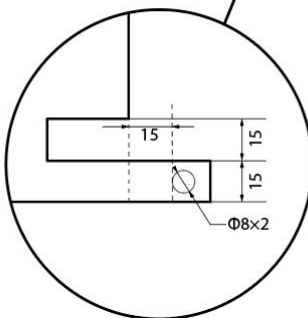
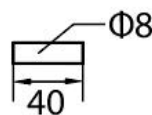
Raw bamboo

E (×4)

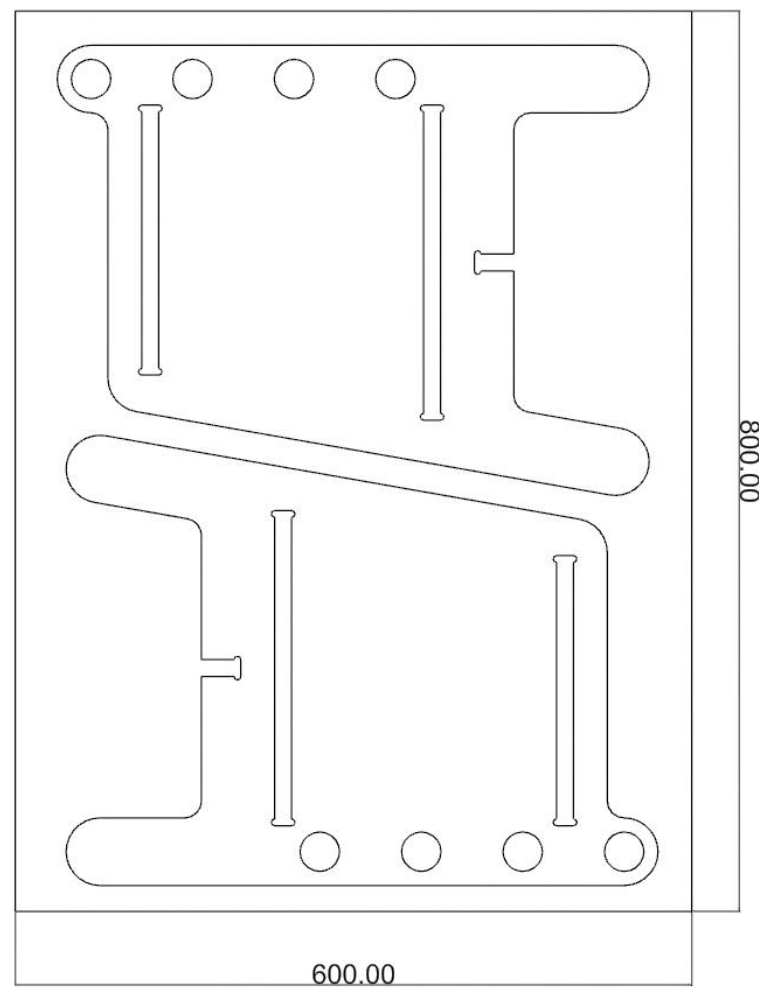
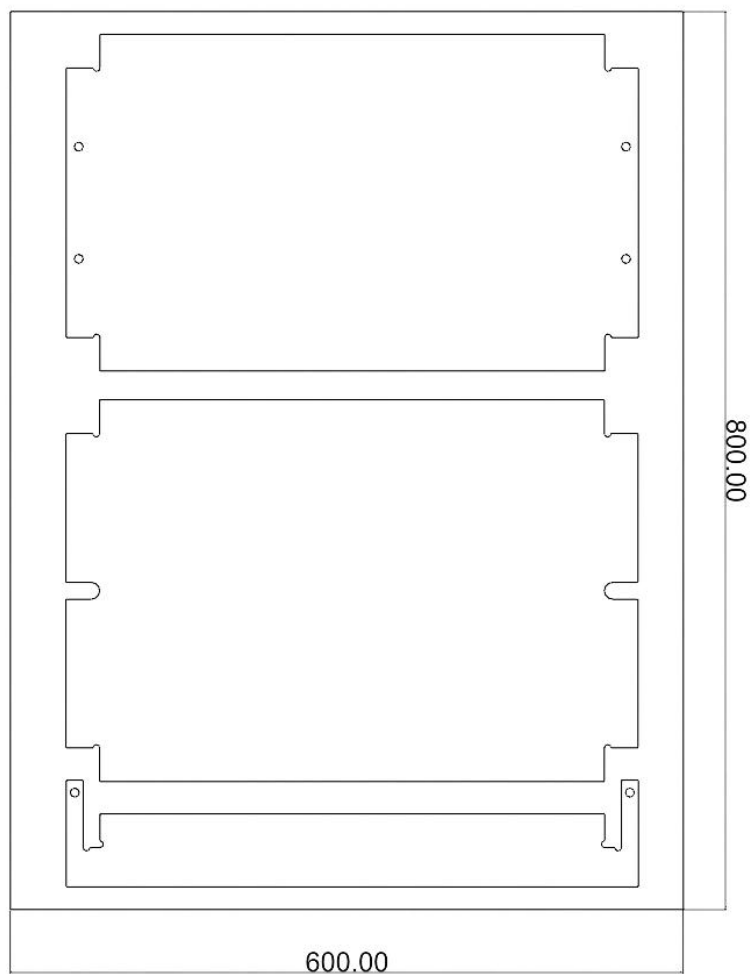


Wooden stick

F (×2)



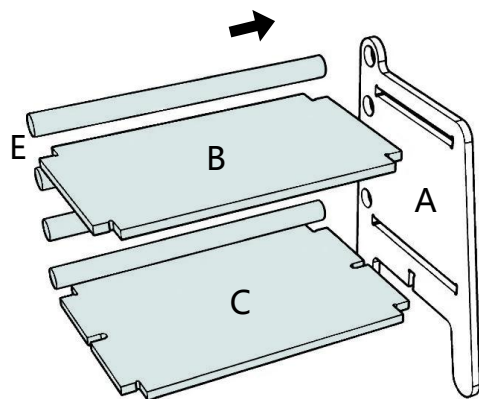
NESTING



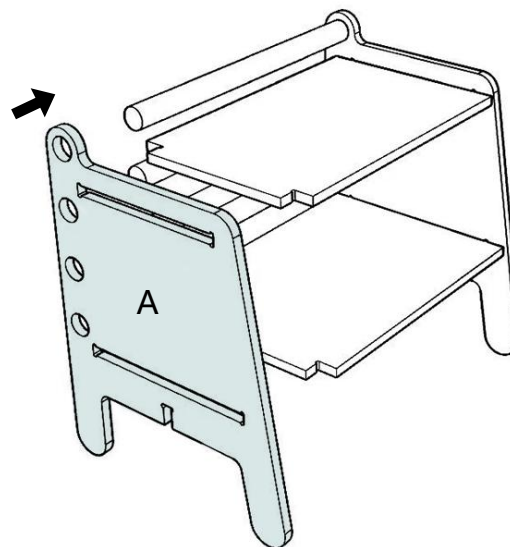
ASSEMBLY



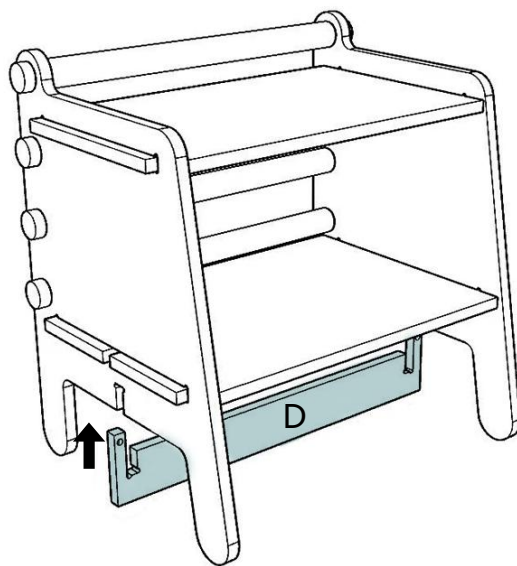
1



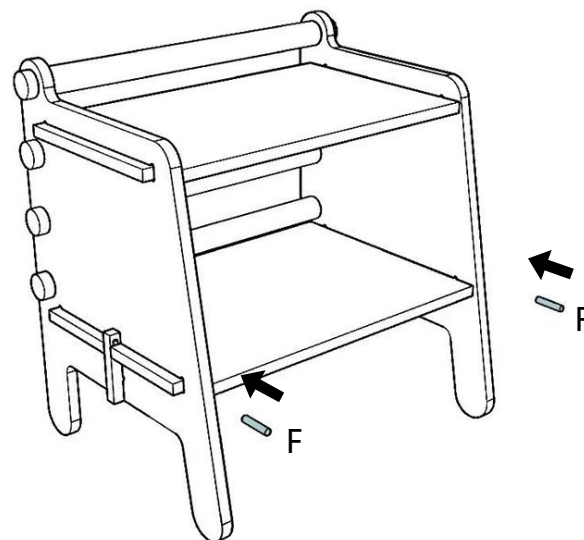
2



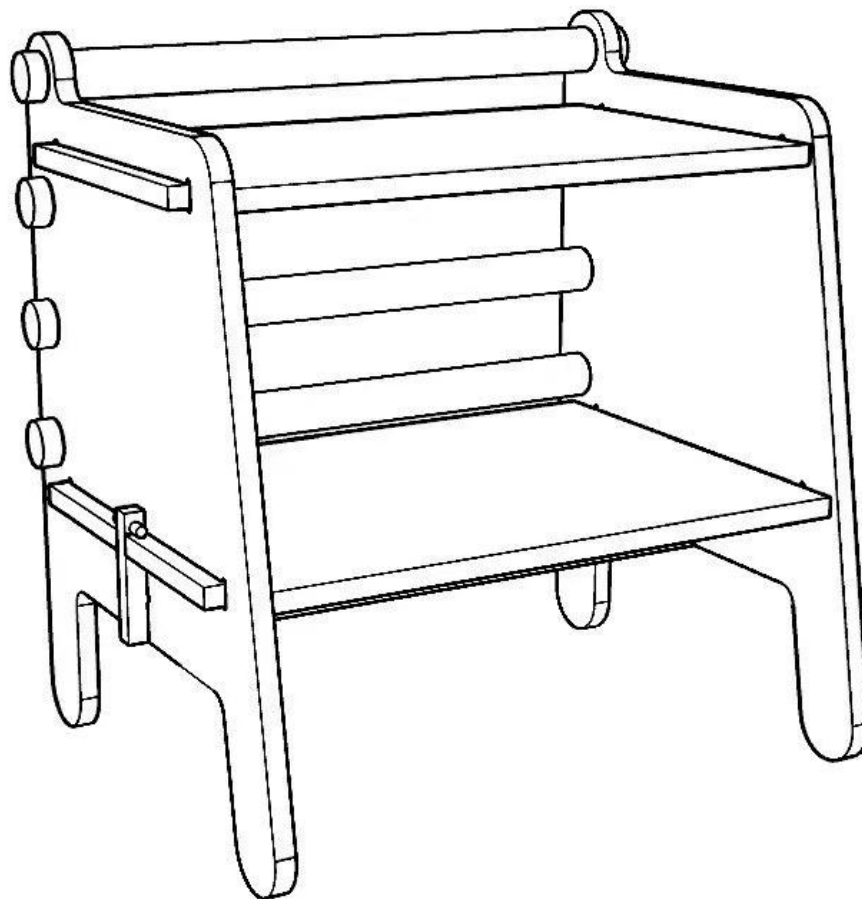
3



4



FINISHED





For more info on how to assemble this product, please visit:
[*https://vimeo.com/489493937*](https://vimeo.com/489493937)