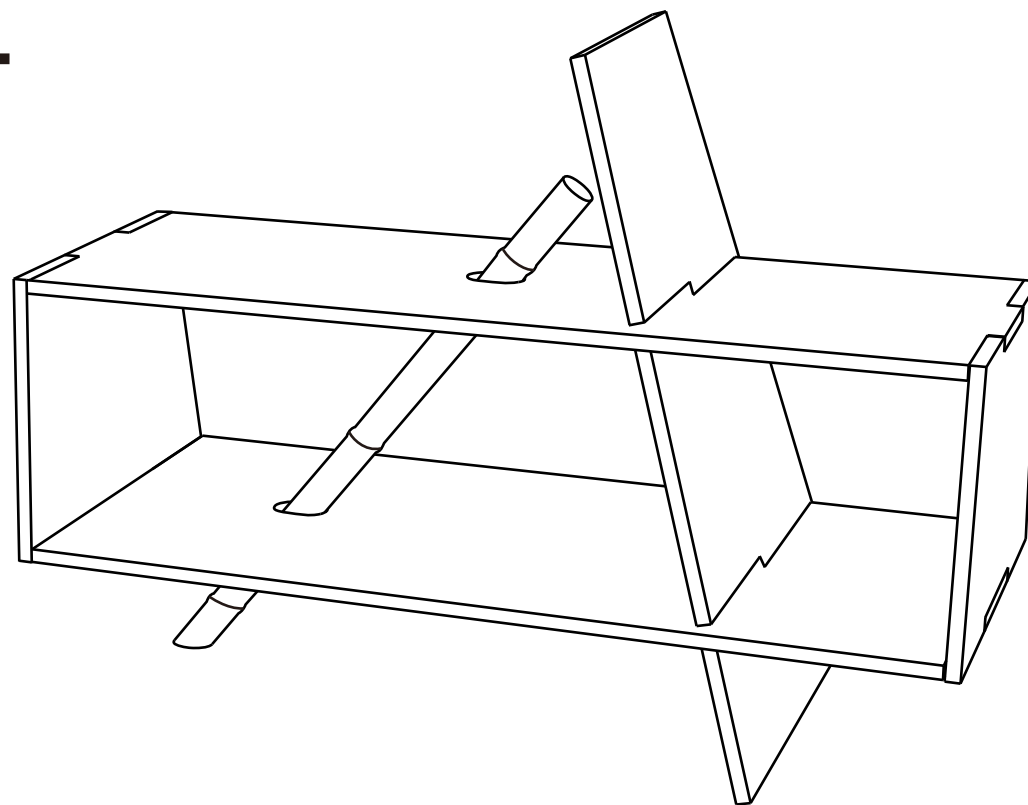




# INTERLACE L

designer YIN YUNLING  
HUANG LIFEI  
HU SHENGLIANG

product STOOL



update 2016/11/26

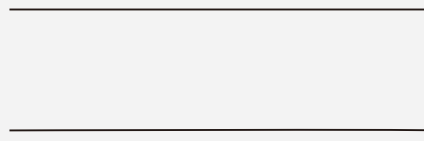
Guangdong University of Technology  
Opendesign Workshop

# MATERIALS



**Bamboo**

Φ35mm\*760mm  
1 pieces



**Plybamboo**

340\*15\*1000mm 1pieces  
430\*15\*1000mm 1pieces  
480\*15\*740mm 1pieces  
430\*15\*430mm 2pieces



**Bamboo stick**

Φ10mm\*150mm  
1 pieces



**Screw**

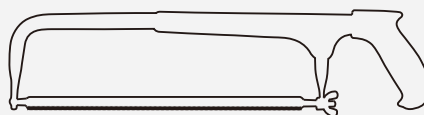
Φ3.5mm\*35mm  
16 pieces

## TOOLS:

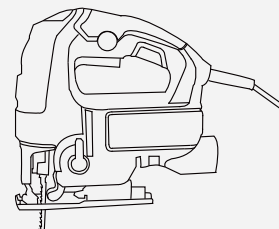


**Electrodrill**

Φ4/6/40mm



**Saw**



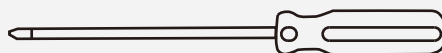
**Electric Saw**



**File**



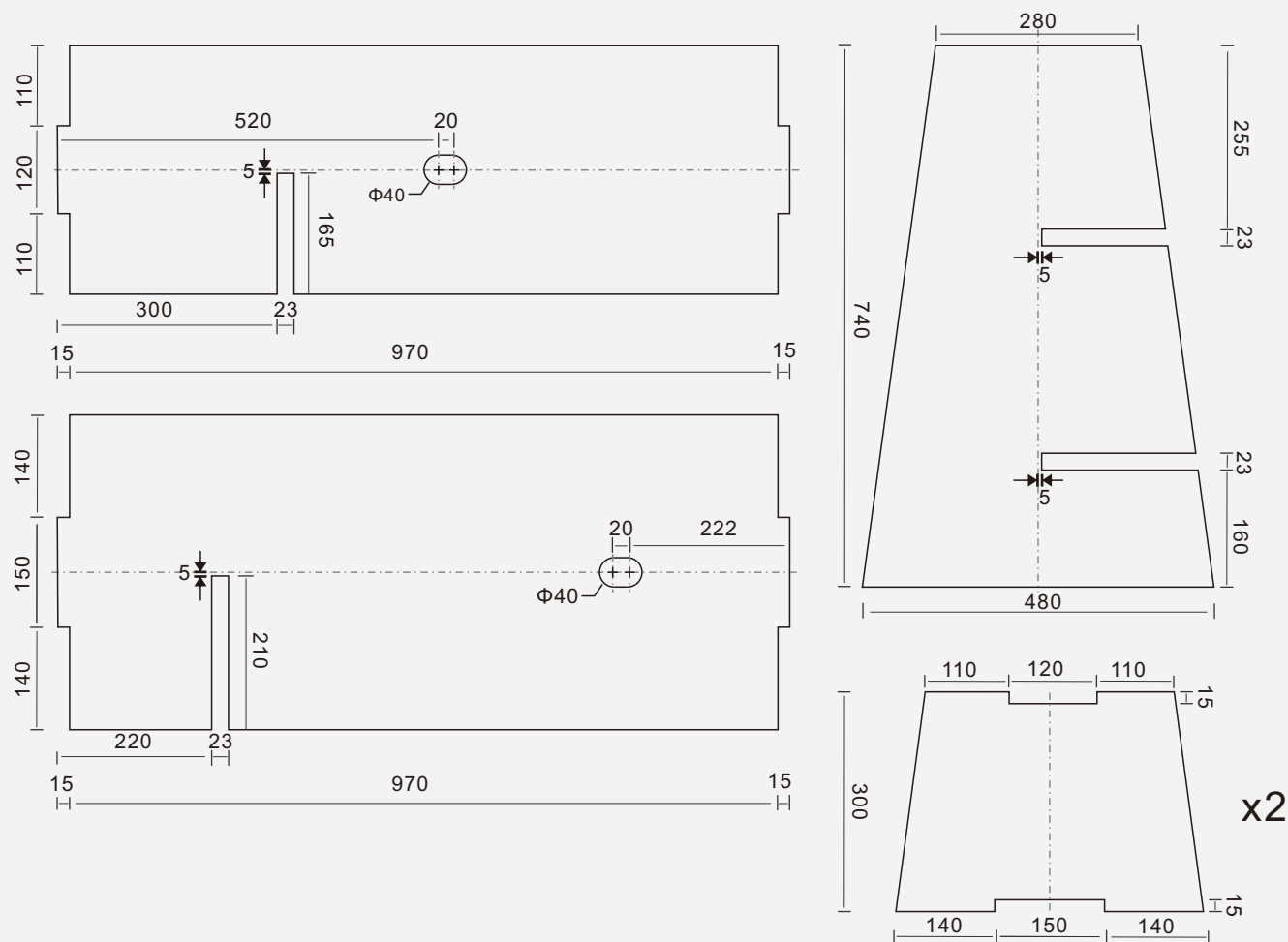
**Sandpaper**



**Screwdriver**

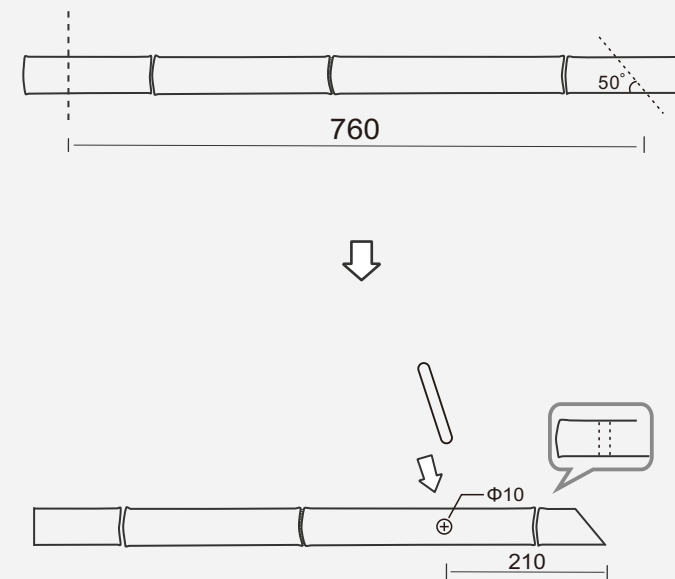


# PARTS



1. cut the plybamboo, and drill  $\Phi 35$ mm holes at the  $\oplus$  places.

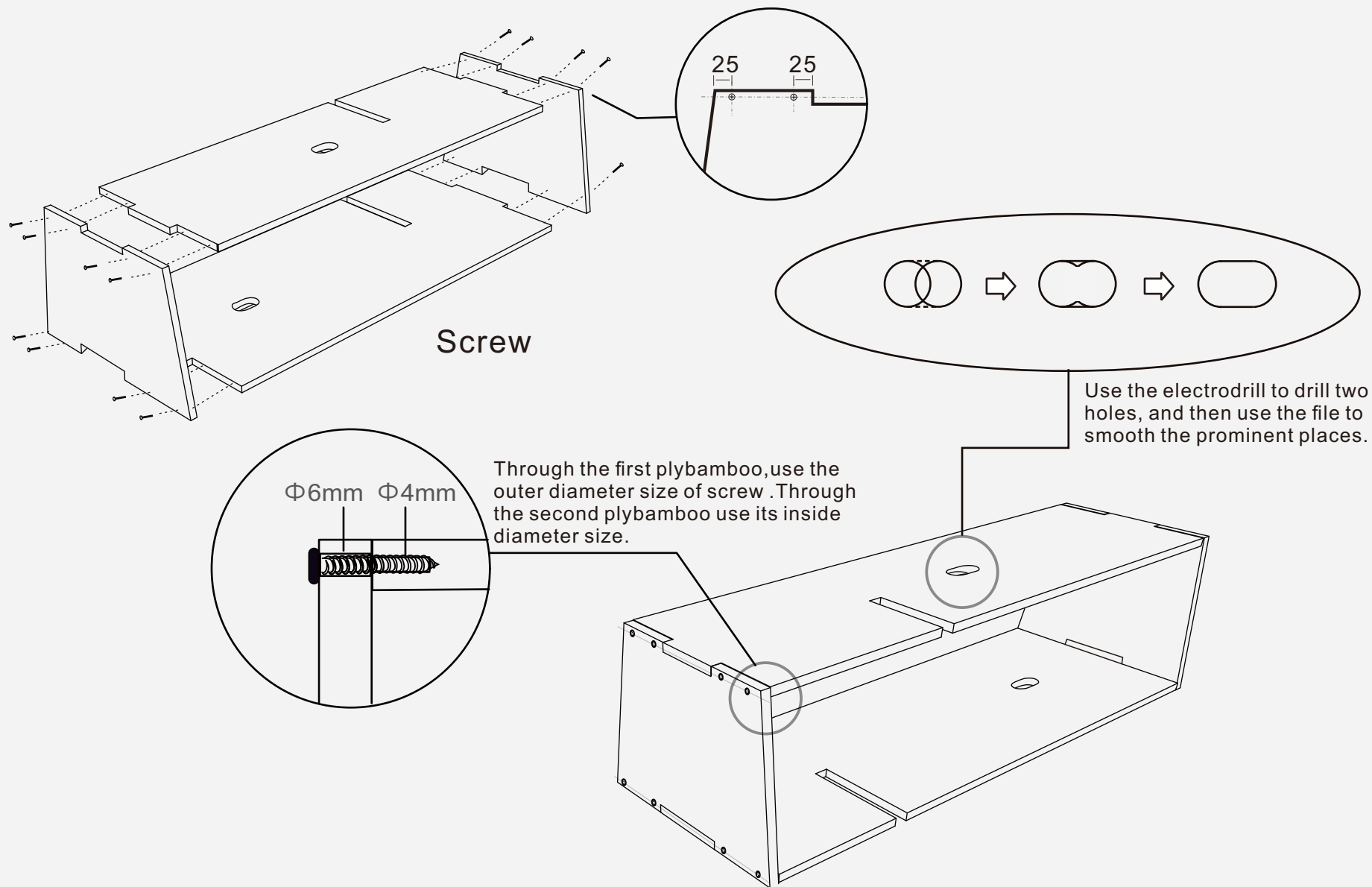
BE CAREFUL!!!  
DO NOT GET HURT DURING  
THE PROCESS!



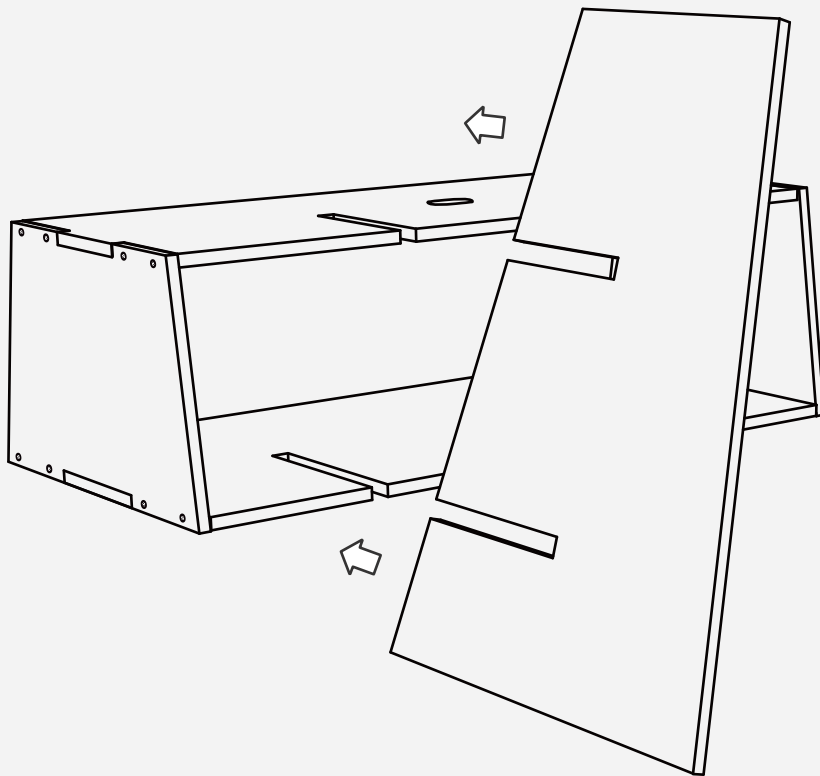
2. cut the bamboo, drill a  $\Phi 10$ mm hole at the  $\oplus$  place, and insert a bamboo stick.



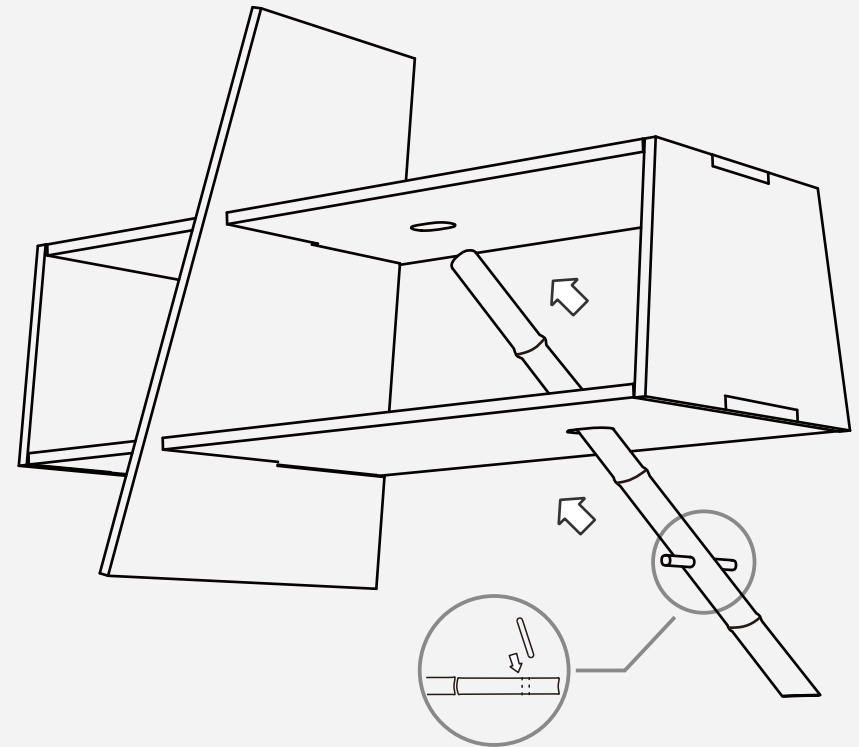
# ASSEMBLY INSTRUCTION



# ASSEMBLY INSTRUCTION



Joint



Put the bamboo inside the holes

(COMPLETED)

