

Spina

designers

Carmen Fernández
Moisés Alonso

product

Wall / chair hanger

MATERIALS

Wood strip

1100 or 1700 x 40 x 30 mm 1 piece

Wooden rod

300 x 10 mm 2 pieces
120 x 4 mm 2 pieces

Elastic cord

1000 x 5Ø mm 1 piece

Hook (Option 1)

70 x 20Ø mm 4 pieces

Spikes (Option 2)

35 x 8Ø mm 3 piece

TOOLS

Rule
Table Drill

Compass
Clamps

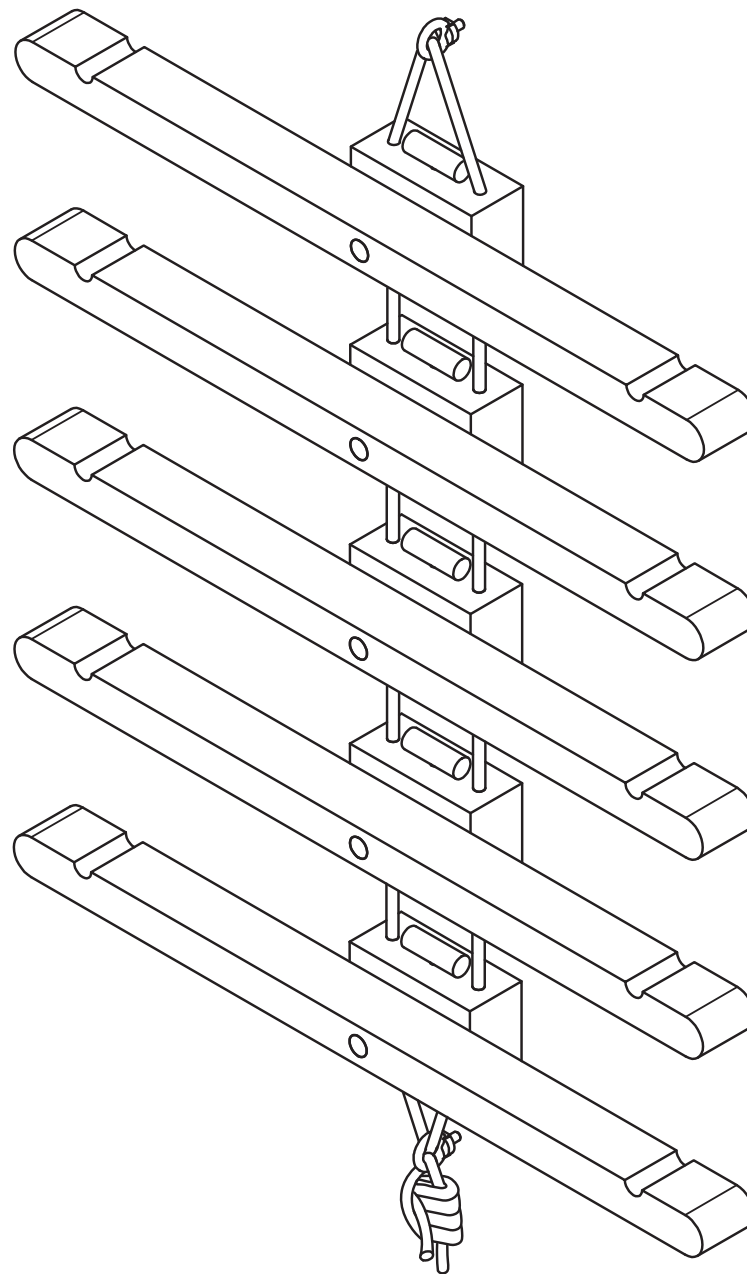
Band saw
Sander

update

2019/11/29

Esdir

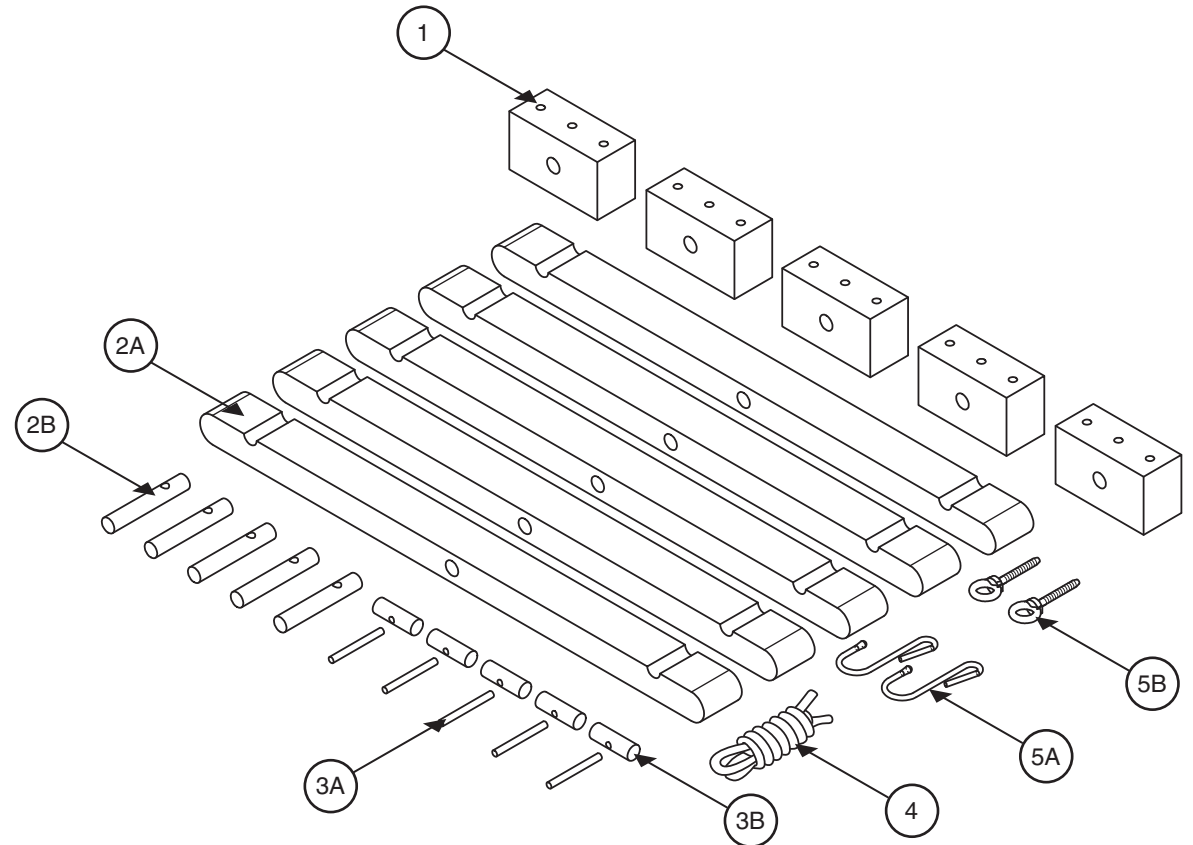
Download OpenDesign project



Spina

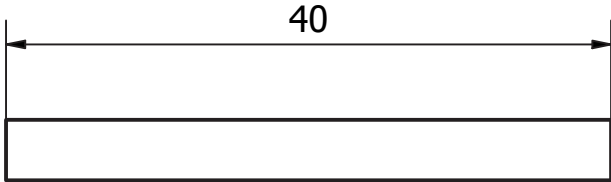
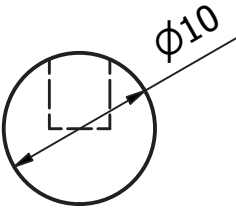
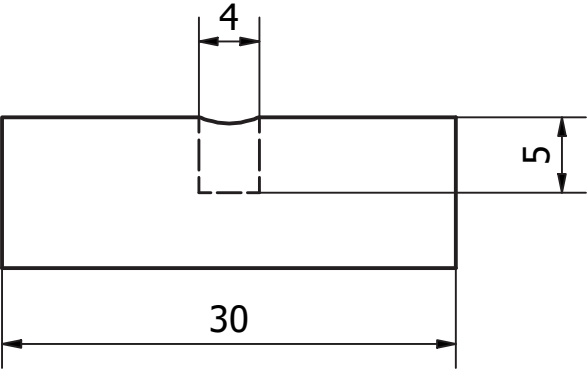
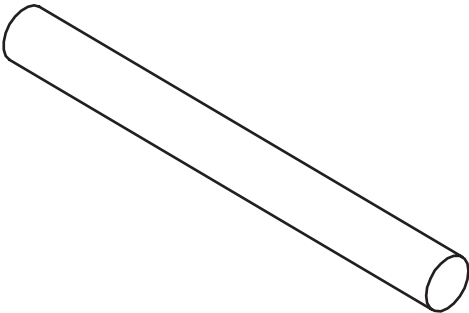
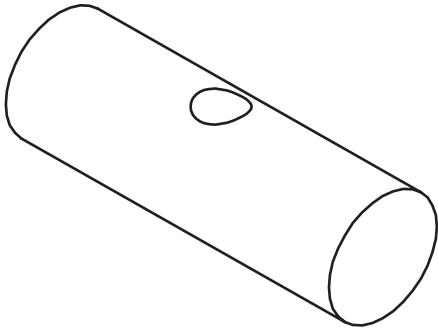
Exploded view and components

COMPONENT	DESCRIPTION	MATERIAL	BLUEPRINT NUMBER	QUANTITY
1	Structure	Wood	1	3 - 6
2A	Hanger	Wood	2A	3 - 6
2B	Hanger	Wood	2B	3 - 6
3A	Stop	Wood	3A	3 - 6
3B	Stop	Wood	3B	3 - 6
4	Rope	Polypropylene	4	3 - 6
5A	Hook	Steel	5A	4
5B	Spikes	Steel	5B	2



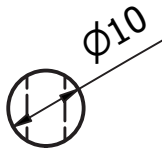
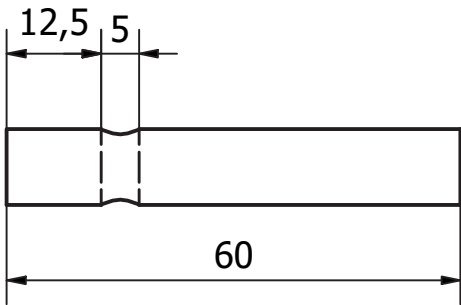
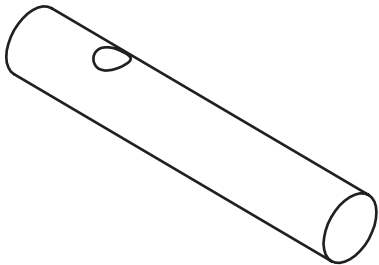
Component 3A and 3B (Stop)

Wood

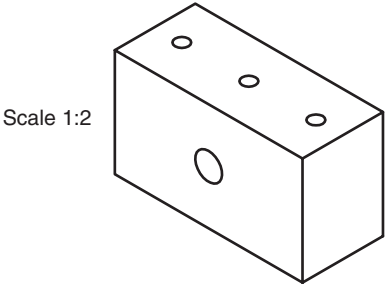


Scale 2:1
Measure: mm

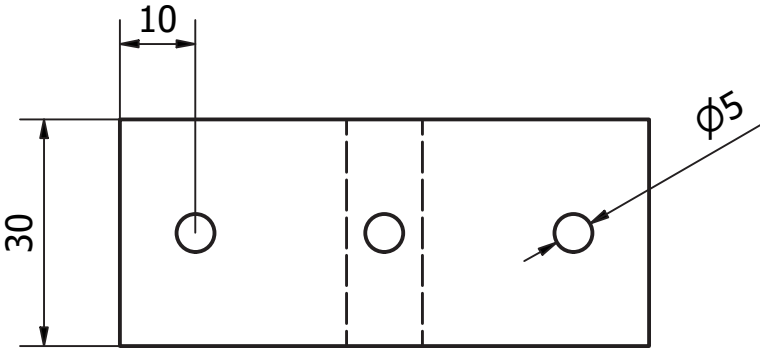
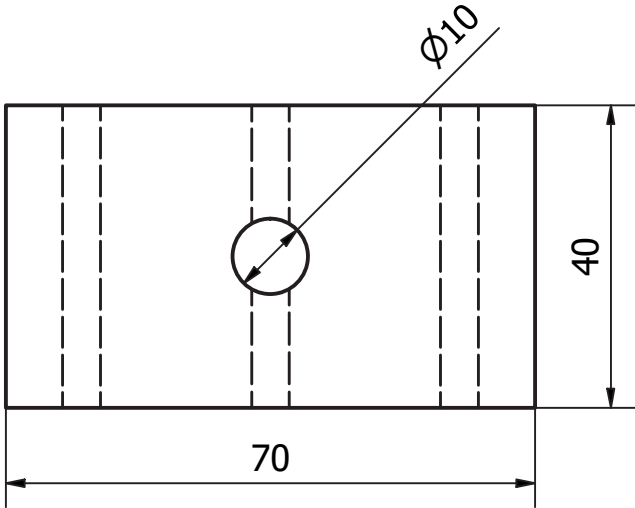
Component 2B (Hanger) and 1 (Structure)
Wood



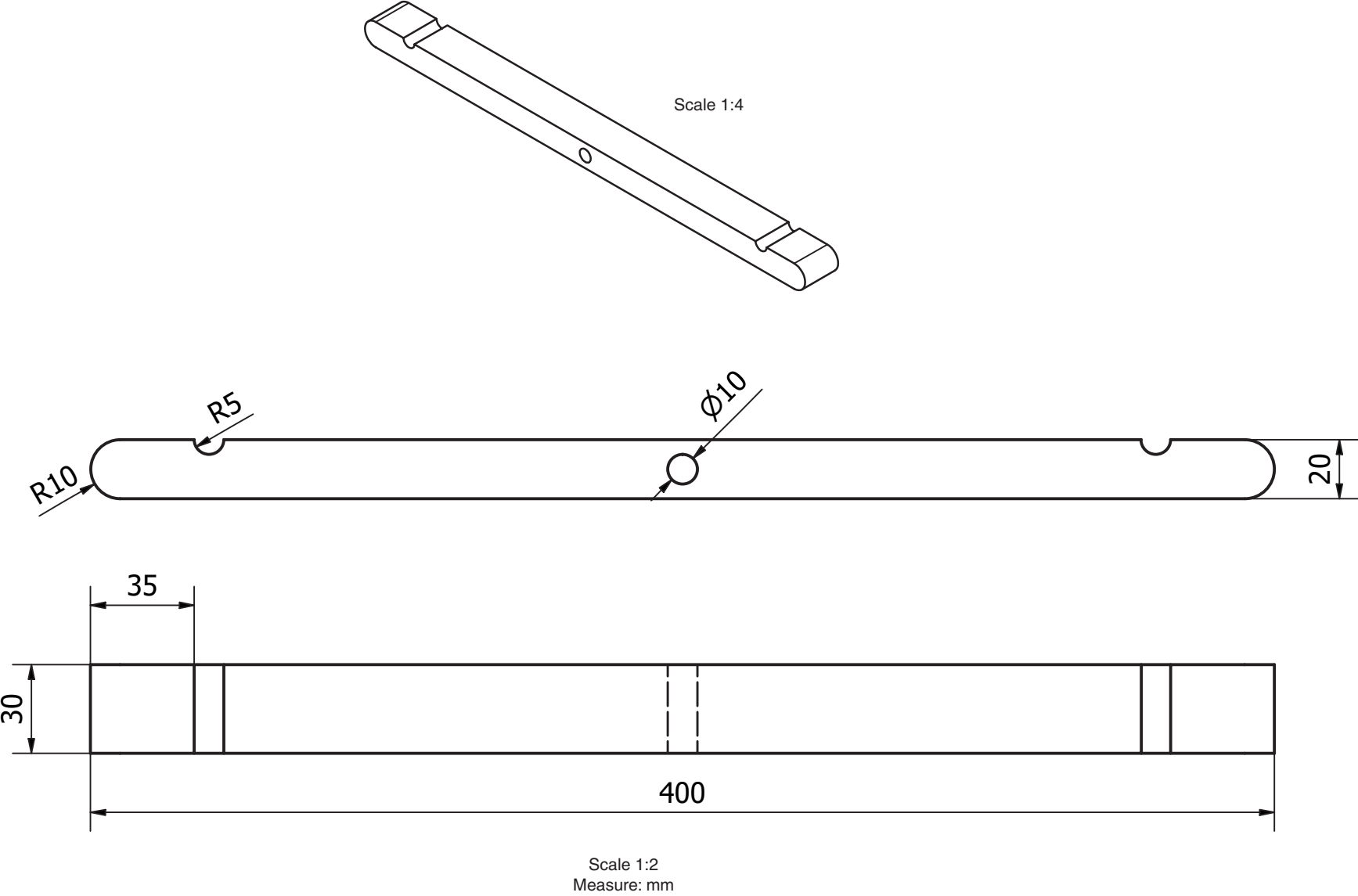
Scale 1:1
Measure: mm



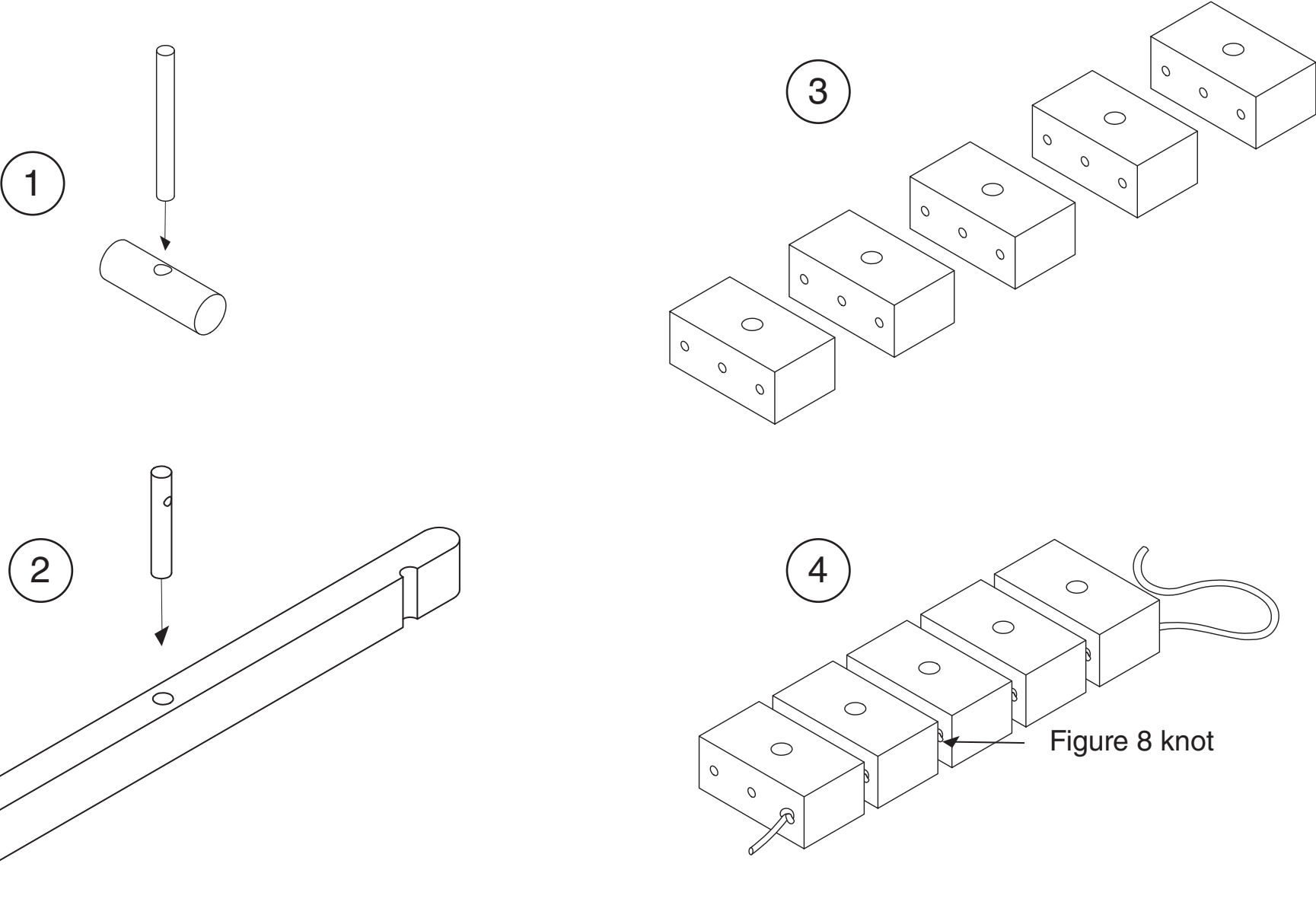
Scale 1:2



Component 2A (Hanger)
Wood



ASSEMBLY



WALL MOUNT

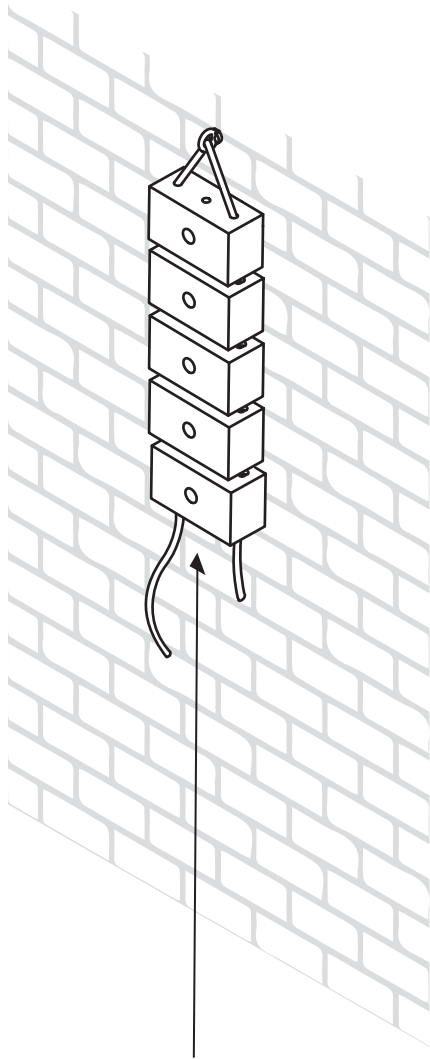
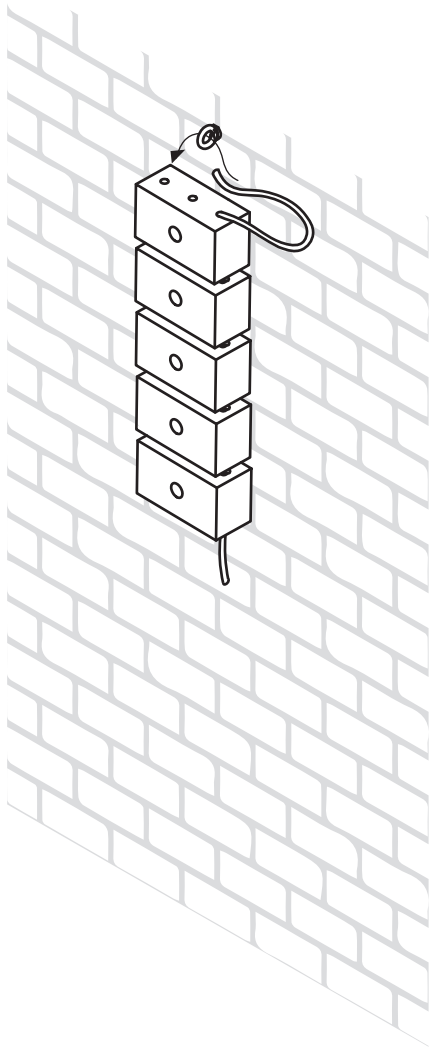
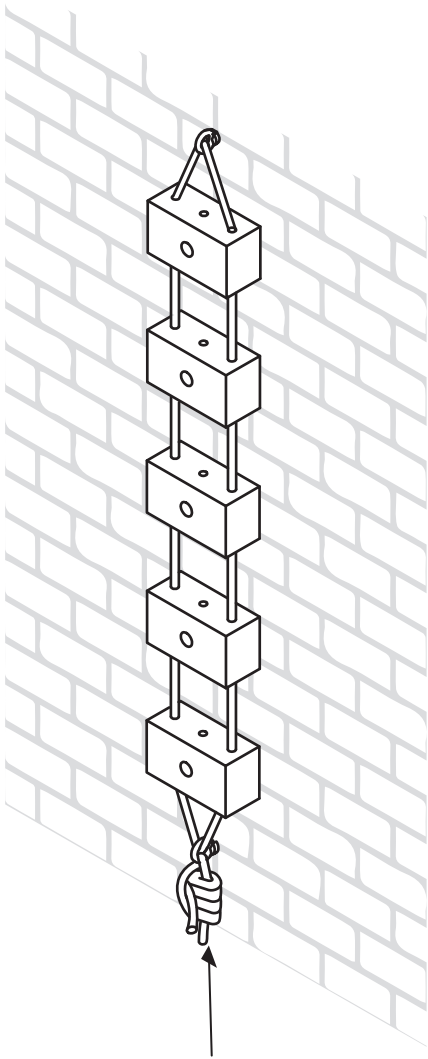
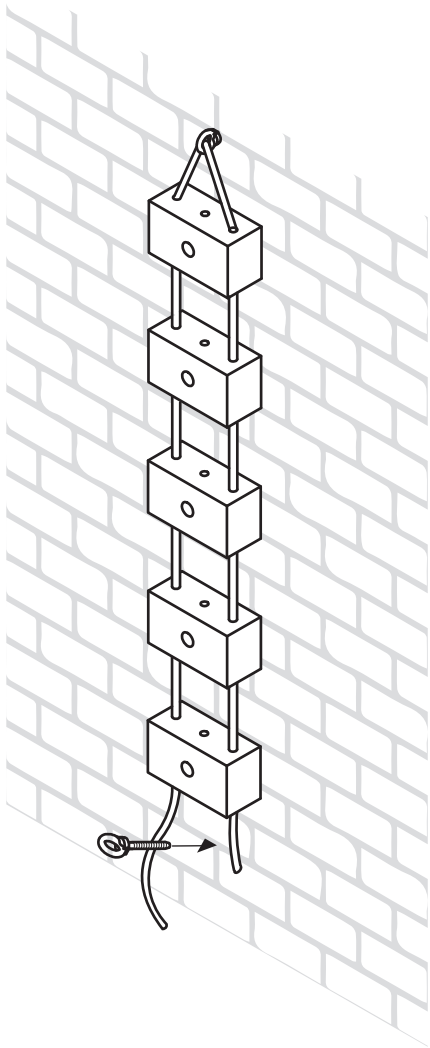
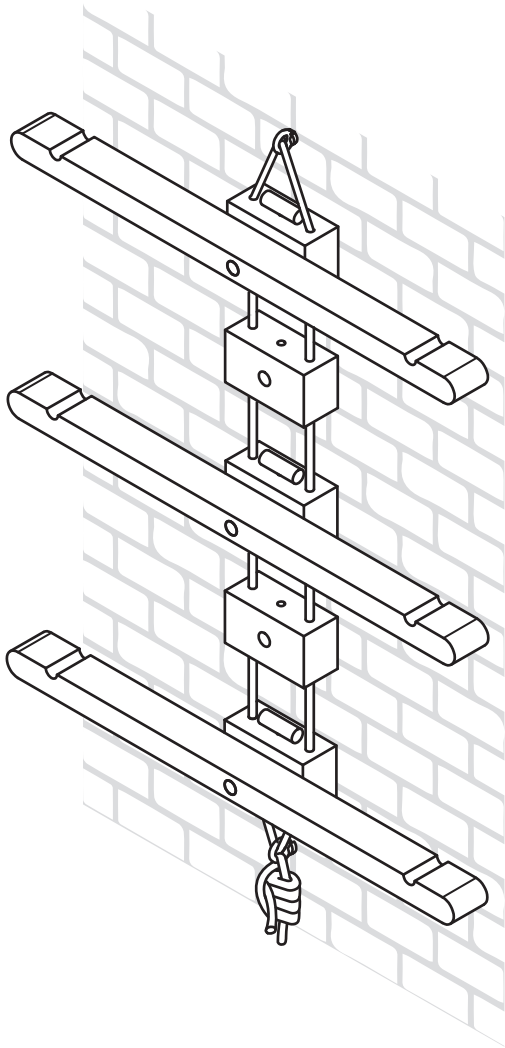


Figure 8 knot

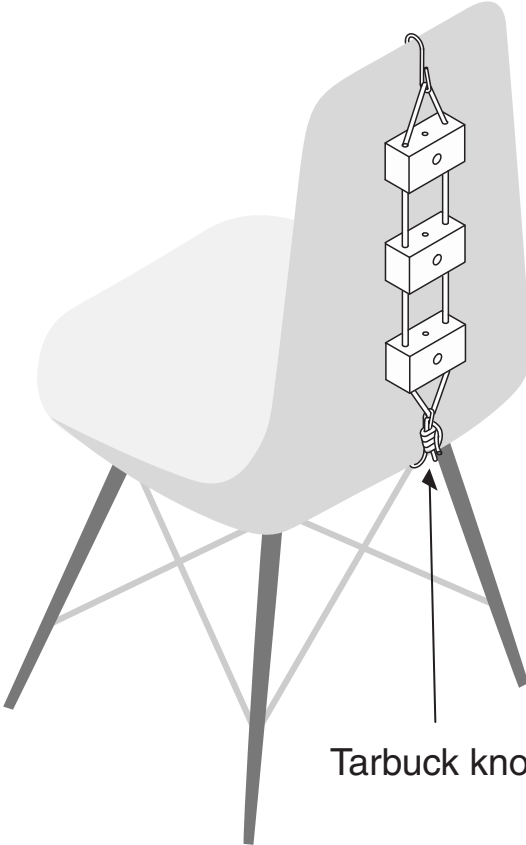
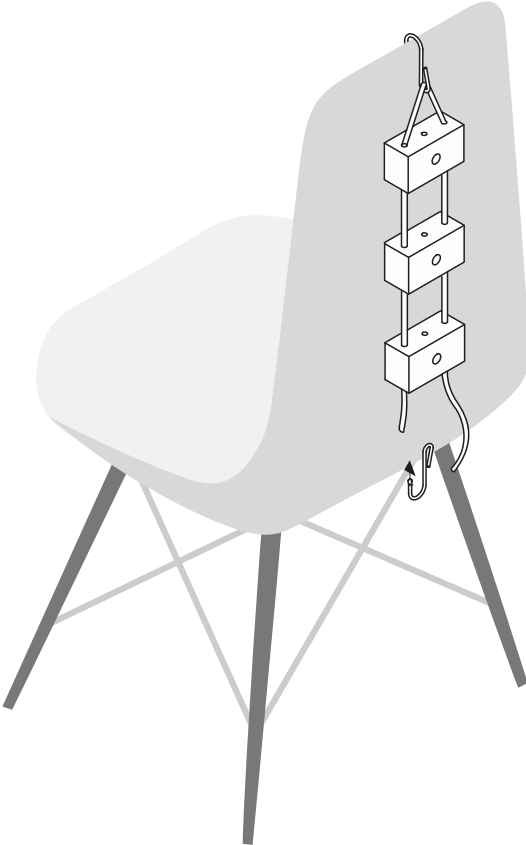
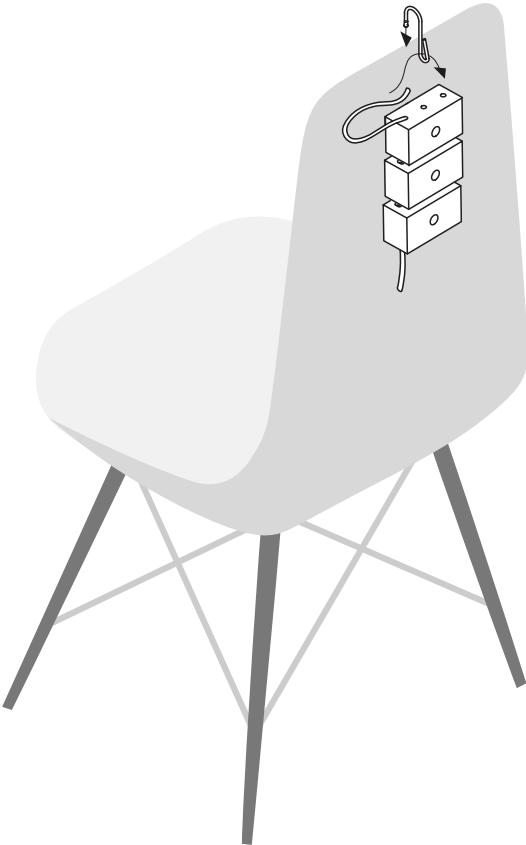
WALL MOUNT



Tarbuck knot



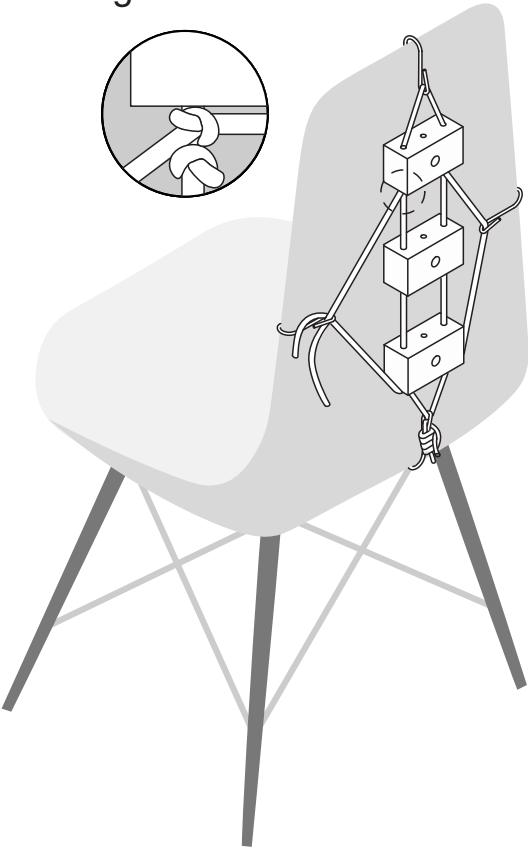
CHAIR MOUNT



Tarbuck knot

CHAIR MOUNT

Figure 8 knot



Tarbuck knot

