

TRY-OH 2.0

designers Daniel Martinez da Lama
Liang huancheng
Huang chumin

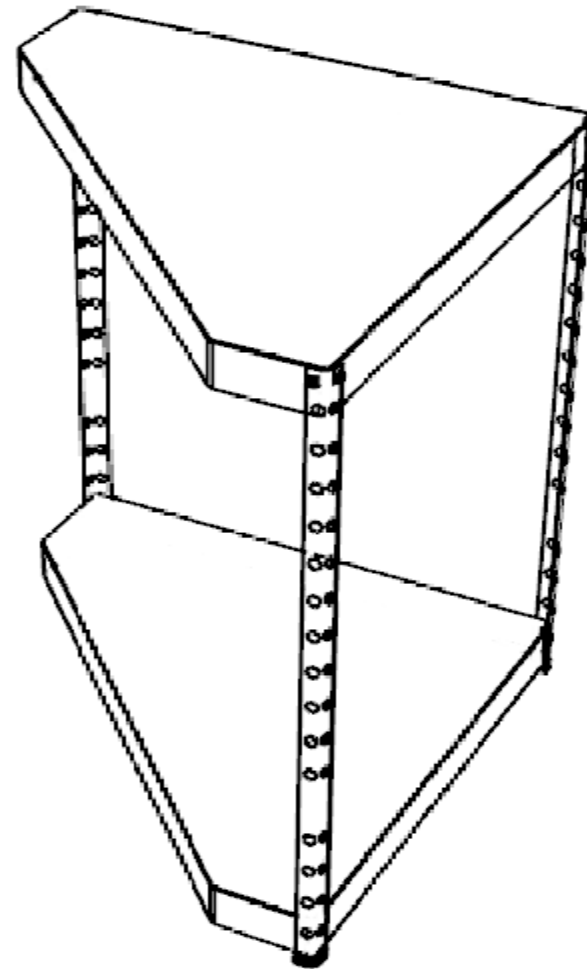
materials 30mm Plybamboo boards, Industrial shelve legs&
plastic bottom caps, Hex Head wood screws&washer

tools Circular saw, Curve saw, Sandpaper, Electric drill

units mm

update 2019/11/11

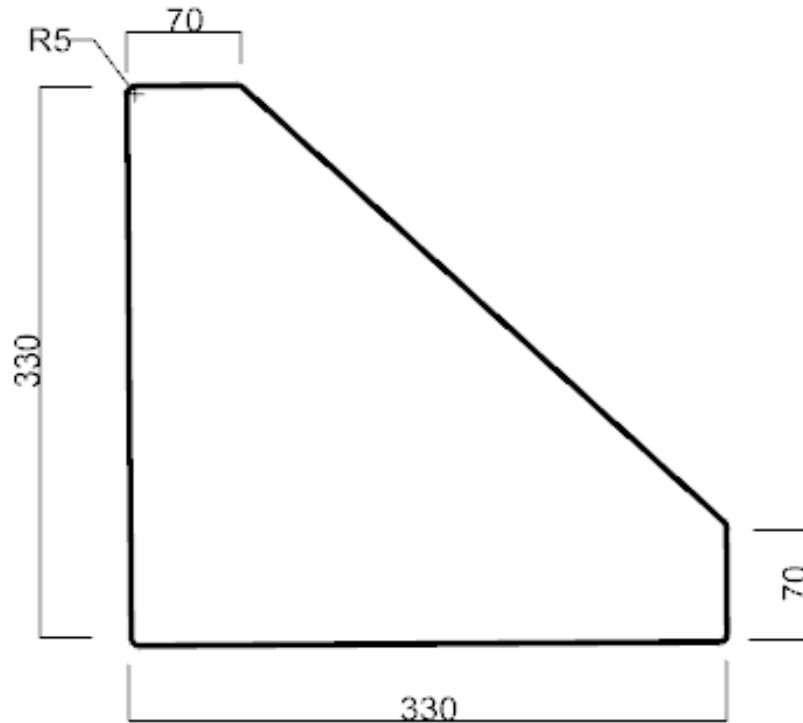
Guangdong University of Technology
Opendedesign+DIY Workshop



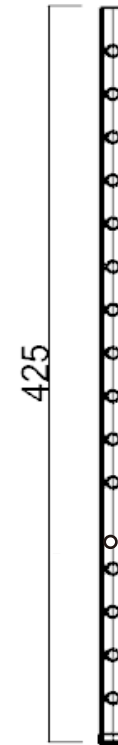
*If you meet some problems when building this chair,
please contact us: info@downloadopendesign.com

PARTS

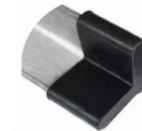
A (x 2) 30mm plybamboo



B (x3) Industrial shelf legs



standard shelf profile



C (x3) plastic bottom caps



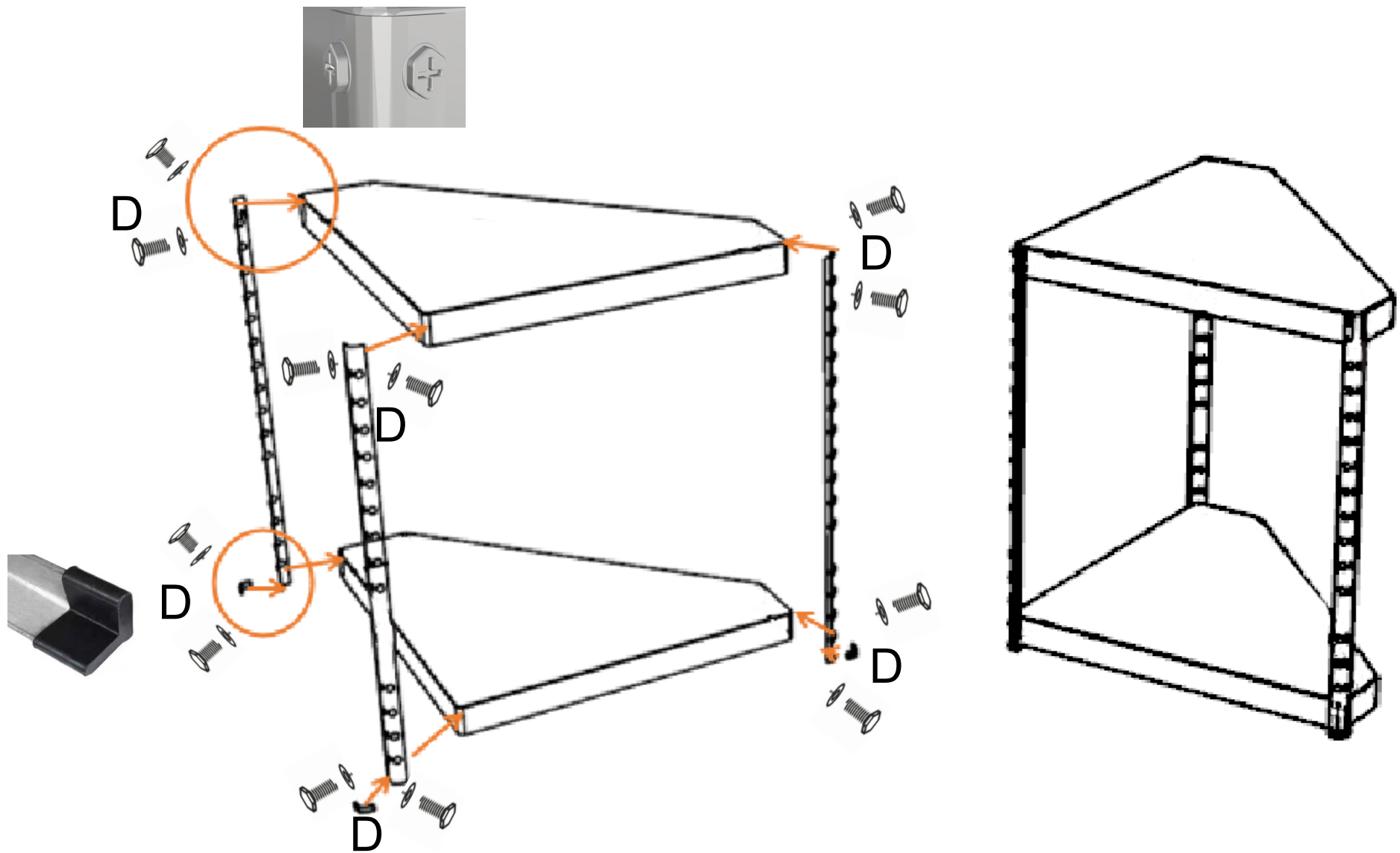
D (x12) $\Phi 5 \times 30$ mm Hex Head wood screws&washer



E (x5m) $\Phi 4$ mm Elastic cord



ASSEMBLY



COMBINATION

