



OpenDesign

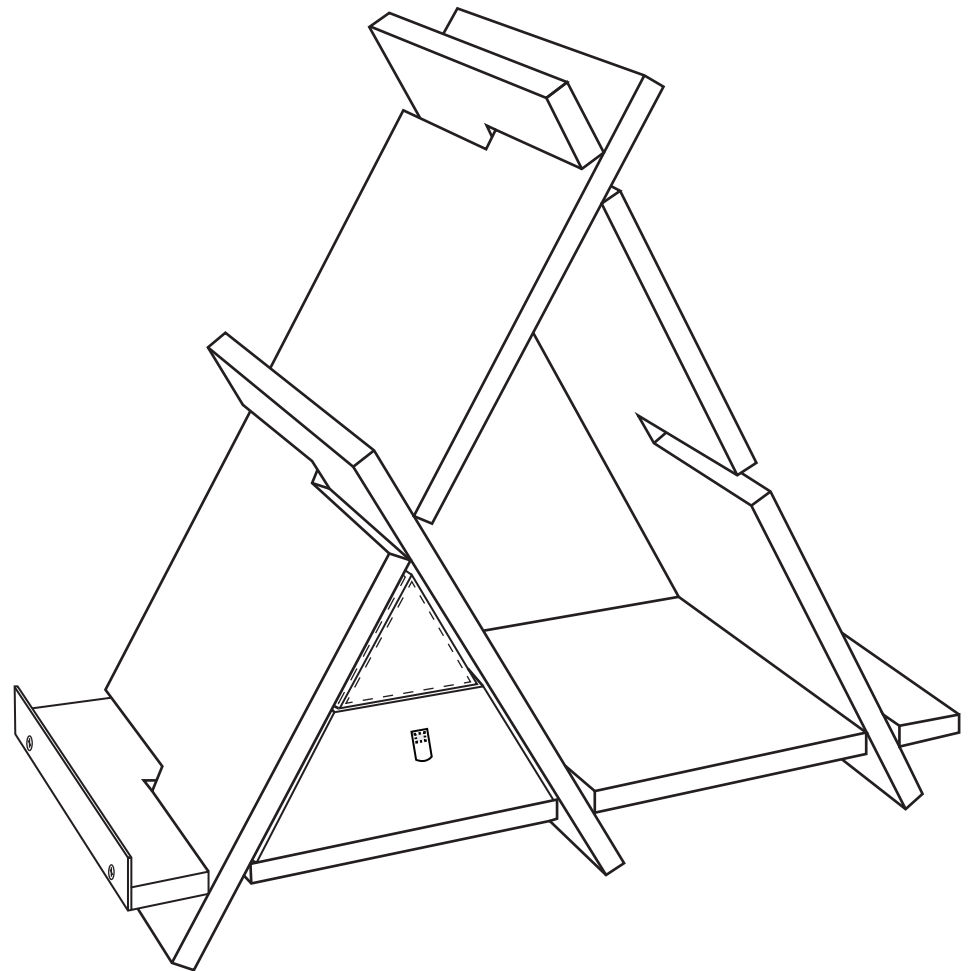
JOKER BOOKSHELF

designer OU HUI MIN
WANG JIN HUA

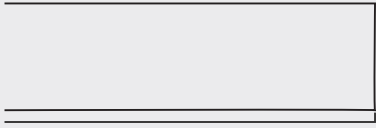
product BOOKSHELF

update 2016/11/26

Guangdong University of Technology
Opendesign Workshop



MATERIALS:



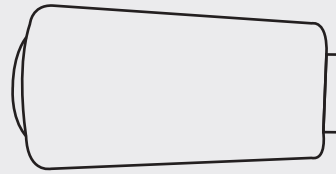
Plybamboo

200x12x480mm 3pieces
 200x12x290mm 1pieces
 188x6x165mm 1pieces
 188x6x85mm 2pieces
 188x6x76mm 2pieces

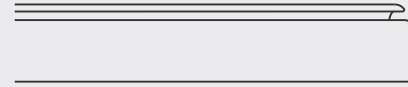


Copper

30X2X200mm 1pieces



String



Leather



Adhesive



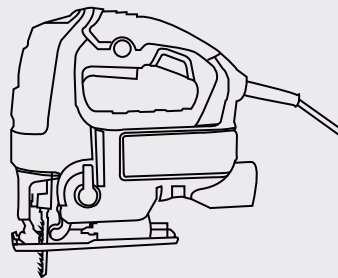
Needle

TOOLS:

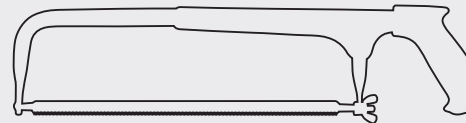


Electrodrill

Φ3 / 8



Electric curve saw

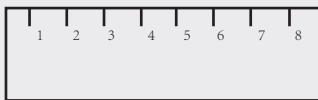


Saw



Screw

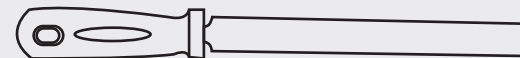
Φ 3 mmX15 mm



Ruler



Pen

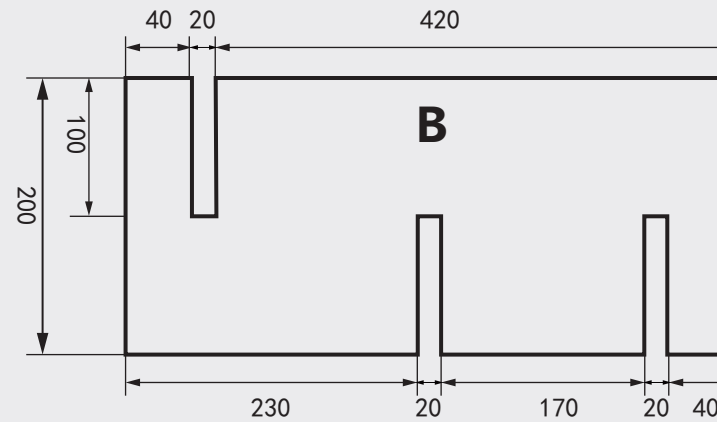
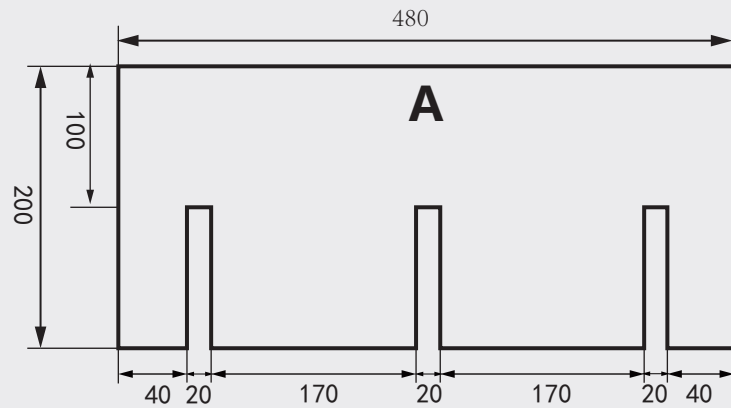


File

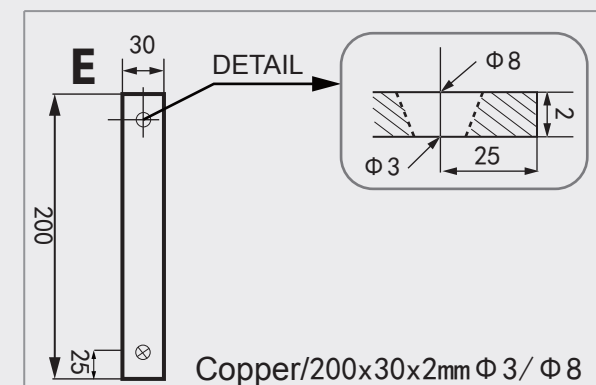
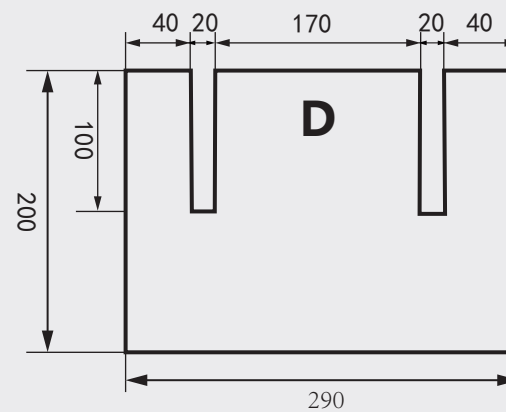
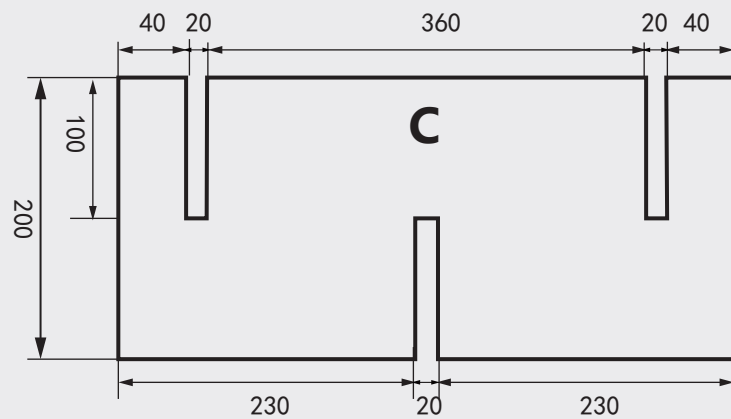


PARTS MEASUREMENTS:(mm)

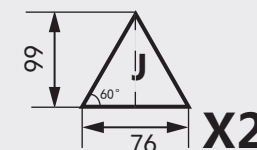
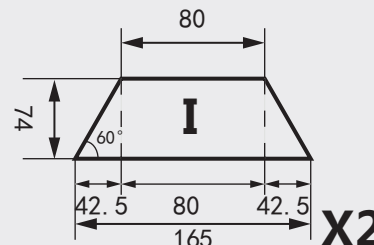
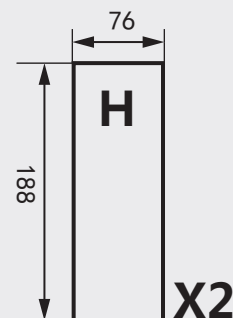
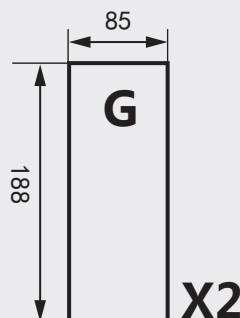
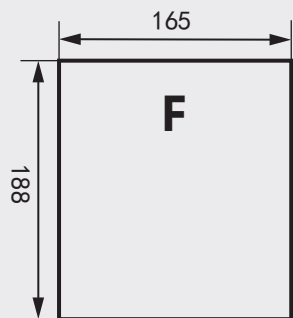
BE CAREFUL!!!
DO NOT GET HURT IN
THE PROCESS!



Bamboo Clappers/2105x615x12mm



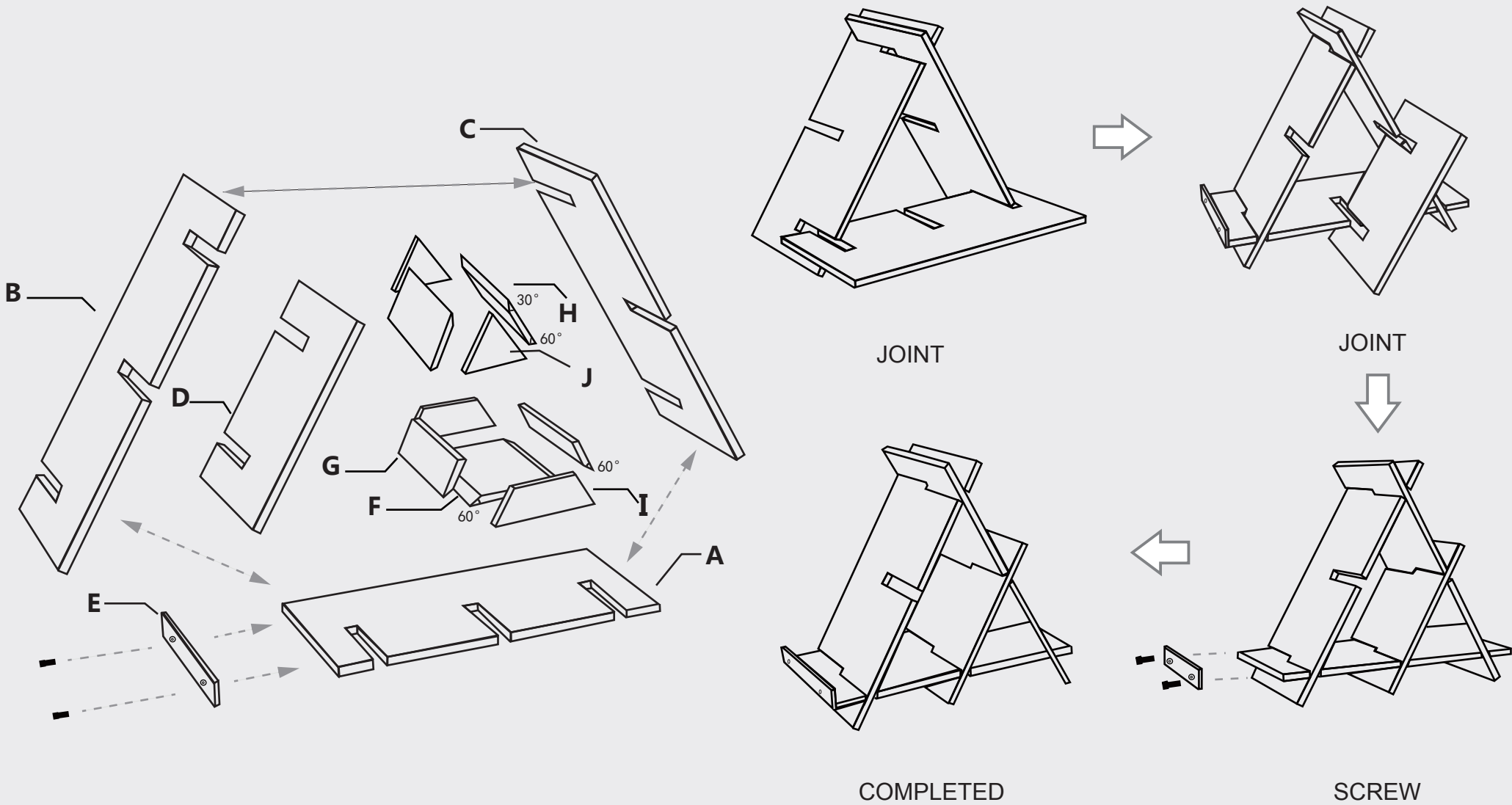
Copper/200x30x2mm Φ 3/ Φ 8



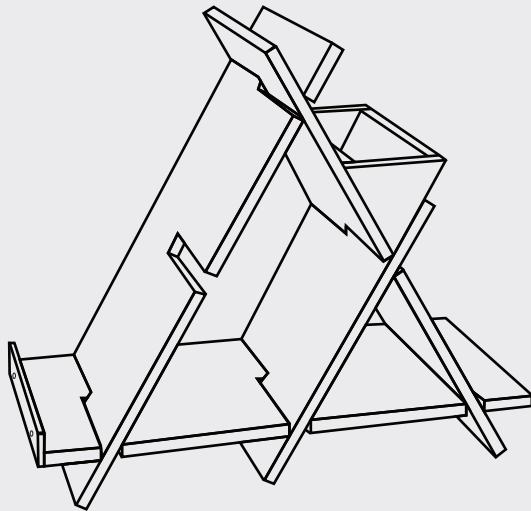
Bamboo Clappers/500x450x6mm



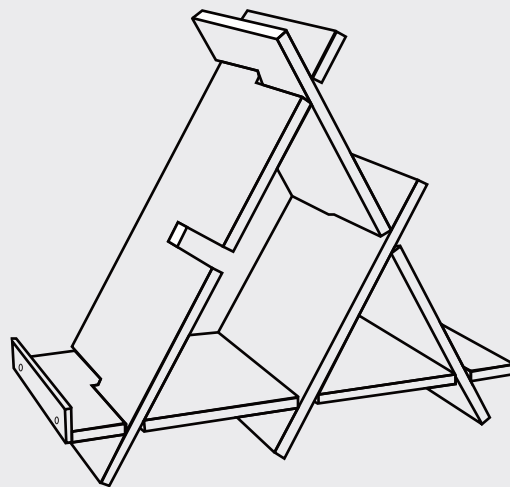
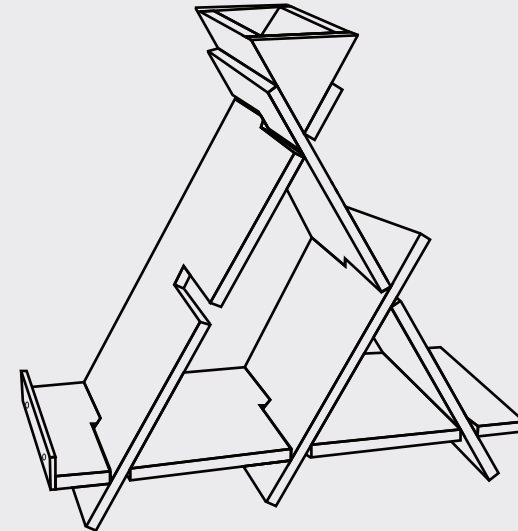
ASSEMBLY INSTRUCTION:



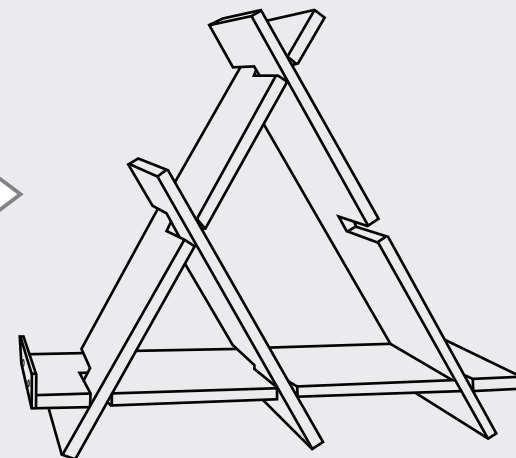
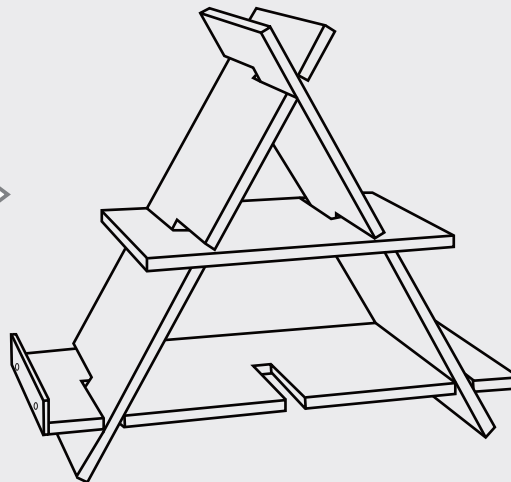
USE VARIATIONS 1



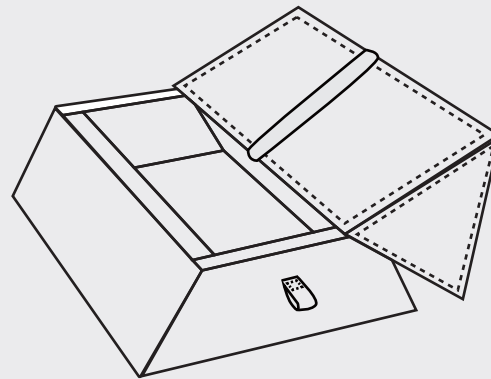
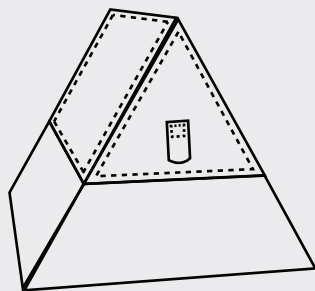
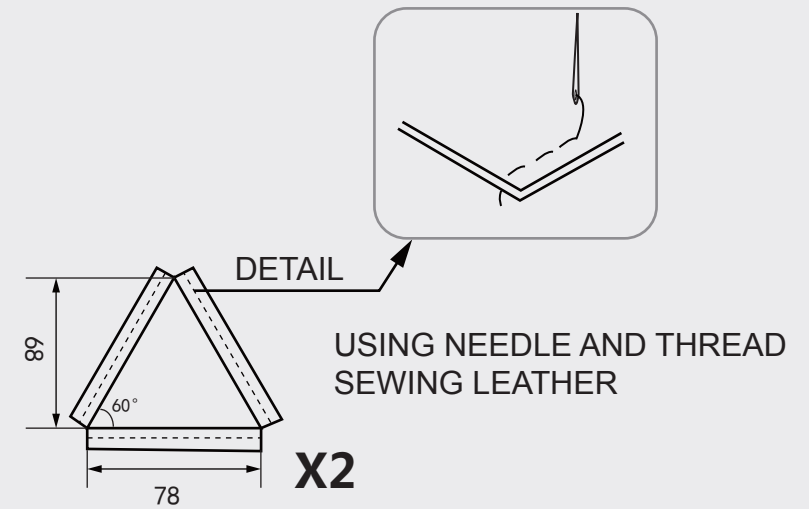
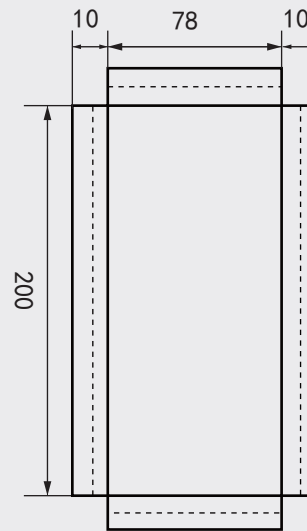
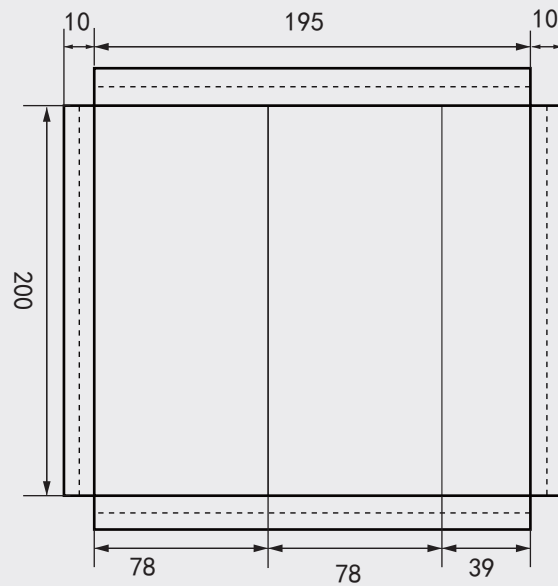
THE LID TO HOLD A PEN



VARIABLE FORM



USE VARIATIONS 2



LID → PENCIL BOX

